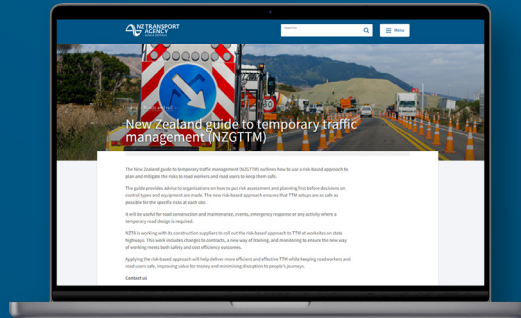


FACTS & GUIDES



The New Zealand Guide to Temporary Traffic Management (NZGTTM) outlines how to use a risk-based approach to plan and mitigate the risks to road workers and road users to keep them safe. The guide provides advice to organisations on how to put risk assessment and planning first before decisions on control types and equipment are made. The new risk-based approach ensures that TTM setups are as safe as possible for the specific risks at each site. It will be useful for road construction and maintenance, events, emergency response or any activity where a temporary road design is required.



[CLICK HERE FOR LINK](#)

WORKSAFE

Mahi Haumarua Aotearoa

These guidelines provide advice on how to manage the health and safety risks road and roadside workers are exposed to while at work. They can help persons conducting a business or undertaking (PCBUs) to meet their duties under the Health and Safety at Work Act 2015 (HSWA). The guidelines are grouped into five parts:

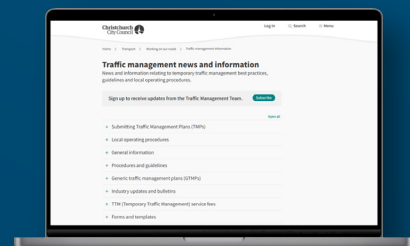
- Part A** - has a general introduction to applying a risk management approach in the road and roadside work environment, and guidance on how to provide for road and roadside worker health and safety throughout the contracting chain.
- Part B** - offers good practice advice for managing common health risks for road and roadside workers.
- Part C** - offers good practice advice for managing common safety risks for road and roadside workers.
- Part D** - offers good practice advice regarding worker facilities, training and certifications, personal protective equipment (PPE), and worker inductions.
- Appendices 1-6** include a glossary of terms and more detailed explanations of key health and safety duties under HSWA.



[CLICK HERE FOR LINK](#)



Christchurch city council offers traffic management news and information News and information relating to temporary traffic management best practices, guidelines and local operating procedures. You can subscribe and sign up to receive updates from the Traffic Management Team.

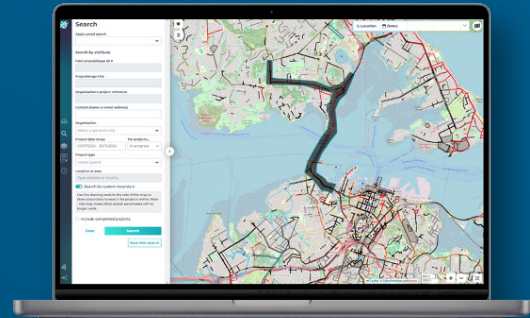


[CLICK HERE FOR LINK](#)

FACTS & GUIDES



The National Forward Works Viewer (NFWV) is a platform designed to improve the planning, coordination, and delivery of infrastructure projects across New Zealand, by providing a centralised system for stakeholders to publish and view project plans, identify clashes, and find opportunities for collaboration. The NFWV includes features such as contact details for project managers, contextual map layers, and the ability to save searches and bookmark projects.

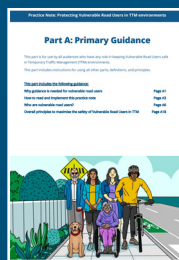


[CLICK HERE FOR LINK](#)



Practice Note: Protecting Vulnerable Road Users in TTM Environments

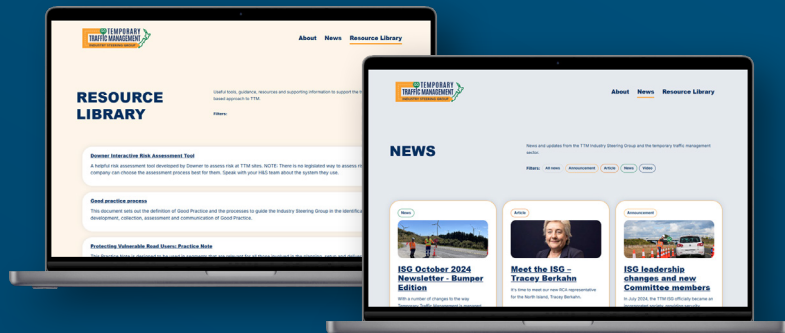
This Practice Note explores the protection of vulnerable road users in TTM environments. It is published in seven parts for different audiences, ranging from the general public and road controlling authorities, to contractors, designers, and field staff.



[CLICK HERE FOR LINK](#)



The Temporary Traffic Management Industry Steering Group (ISG) aims to collaboratively shape the future of TTM in New Zealand as we transition from the compliance-based Code of practice for temporary traffic management (CoPTTM) to the more risk-based approach outlined in the New Zealand guide to temporary traffic management (NZGTTM). The ISG is made up of representatives from TTM suppliers, utilities, contractors, engineering consultants, road controlling authorities and road workers. Make sure to **SIGN UP THEIR THEIR NEWSLETTER**

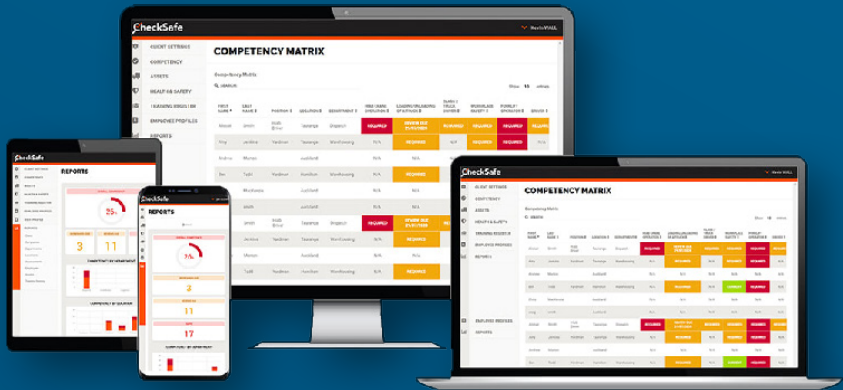


[CLICK HERE FOR LINK](#)

TOOLS



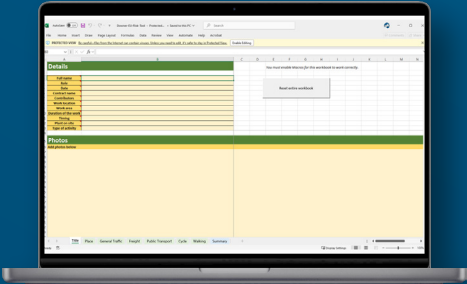
Build your organisation's competency framework using CheckSafe's realtime workplace skills management software. If you're responsible for people, staff training, competencies or asset and process compliance, and want to add value to your business, then you should consider CheckSafe. CheckSafe suits businesses with 50 plus employees and is particularly effective for businesses with multiple branches, making sure your people and your assets are kept up to date in regard to health and safety requirements, so they can perform their jobs safely



[CLICK HERE FOR LINK](#)



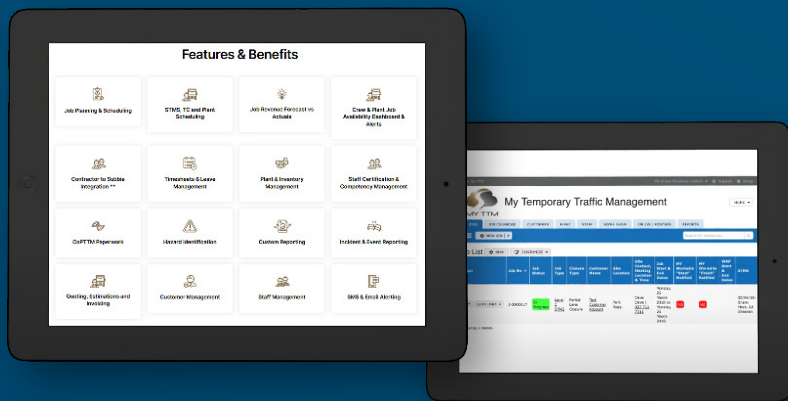
The Downer Interactive Risk Assessment Tool is a helpful risk assessment tool (macro-enabled workbook) developed by Downer to assess risk at TTM sites. NOTE: There is no legislated way to assess risks. Each company can choose the assessment process best for them. Speak with your H&S team about the system they use.



[CLICK HERE FOR LINK](#)



MyTTM is a customised cloud solution that can solve a lot of the traditional challenges TTM companies face such as large volumes of manual paperwork, human error with paperwork completion or no completed paperwork at all, lack of reporting impacting the ability to identify where improvements to people and process are required, reporting to regulatory bodies and customers.



[CLICK HERE FOR LINK](#)

NEWS



Here are some great articles for you to check out!



Getting used to the NZ Guide to Temporary Traffic Management

[CLICK HERE FOR LINK](#)



Temporary traffic management changes – keep calm and carry on

[CLICK HERE FOR LINK](#)



Pssst – what do they mean by a risk based approach for temporary traffic management?

[CLICK HERE FOR LINK](#)

WEBINARS

TTM webinar 9: jointly hosted by NZTA and the TTM industry steering group

Monday 16 and Wednesday 18 October 2023

We hosted two webinars with members of the TTM industry steering group (ISG) and industry guests

[CLICK HERE FOR LINK](#)

