



**2023 HIREPOOL  
CONSTRUCTION  
EXCELLENCE AWARDS**  

---

**CIVIL CONTRACTORS NZ**

---



**Incorporating the Connexis Civil Industry Training Awards and the Z People Awards**



# Celebrating Construction Excellence

4 Judges comments on the Winners and Highly Commended entrants in the CCNZ Hirepool Construction Excellence Awards 2023 categories 1-6.

## CATEGORY 1

Projects with a value of up to \$2m

- 14 Tauherenikau Suspension Bridge – Design and Construction  
**Abseil Access**
- 16 Lake Waikare Control Gate  
**Brian Perry Civil**
- 18 Highway 22 Culvert Upgrade  
**Downer NZ**
- 20 Rissington Bailey Bridge project  
**Fulton Hogan**
- 22 Mount Messenger Cableway Anchors  
**Groundfix**
- 24 Waimea Inlet Sewer Line Recommission  
**Interflow Pty**
- 26 Matipo Street Rail Crossing Renewal Christchurch  
**Isaac Construction**
- 28 State Highway 39 Mangaotama Stream Bridge Replacement  
**Waka Kotahi NZ Transport Agency**
- 30 Te Reinga Bridge  
**Quality Roading and Services (Wairoa)**
- 32 Paihia to Opuā Coastal Walkway – Stage 1 Bridge and Boardwalk Replacement  
**Steve Bowling Contracting**

## CATEGORY 2

Projects with a value of between \$2m and \$5m

- 34 Alfred Cox Skate Park Redevelopment  
**Angus McMillan Concrete and Currie Construction**
- 36 Blenheim Major Sewer Upgrade Pump Stations  
**ARC Projects**
- 38 Yarrow East Stand Project  
**Brian Perry Civil**
- 40 Poutu Intake and Tunnel Erosion Repair Work  
**Connell Contractors**
- 42 Rosedale Sludge Screens  
**Fulton Hogan**
- 44 Mission Bay Town Centre Upgrade  
**Fulton Hogan**

- 46 Ngaio Gorge Slope Stabilisation Improvements  
**Fulton Hogan**
- 48 Hoon Hay Basin Outlet and Cashmere Stream Control Structure  
**GSL**
- 50 Clyde Main Wastewater Pump Station  
**HEB Construction**
- 52 Ravensbourne Wharf Refurbishment  
**HEB Construction**
- 54 Bridge 13 Hokitika Rail Beam Replacement  
**Liddell Contracting**
- 56 289 Northern Connection Culvert E530  
**McConnell Dowell Constructors**
- 58 Napier / Crosses Roundabout Construction  
**Russell Roads**
- 60 Flaxmill Inundation Remediation Project  
**Russell Roads**
- 62 560T Travel-Lift Runway Construction  
**Steve Bowling Contracting**
- 64 Waiwaka Terrace Stormwater Culvert  
**Downer NZ**

## CATEGORY 3

Projects with a value of between \$5m and \$20m

- 66 Porirua Wastewater Treatment Plant: Hydraulic Upgrade and Milliscreen Channel Remediation  
**Brian Perry Civil**
- 68 Helensville Wastewater Treatment Plant Upgrade  
**Brian Perry Civil**
- 70 Invercargill Streetscapes – Stage 1  
**Downer NZ**
- 72 48-day State Highway 6 Remediation Project  
**Fulton Hogan**
- 74 QLDC Recreation Ground Pump Station and Rising Main  
**HEB Construction**
- 76 Lincoln Road Roading and Watermain Renewal Stage 1 (Barrington Street – Moorhouse Avenue)  
**Isaac Construction**
- 78 Birch Hill Vineyard and Dam Development  
**Simcox Construction**
- 80 Pā Reo  
**Pritchard Civil**

## CATEGORY 4

Projects with a value of between \$20m and \$100m

- 82 Darfield to Pines Waste Water Pipeline  
**CORDE**
- 84 Chatham Islands Airport – Inia William Tuuta Memorial Airport, Upgrade ECI  
**Downer NZ**
- 86 Waiari Water Treatment Plant  
**Fulton Hogan**
- 88 Omāroro Reservoir  
**HEB Construction**
- 90 AIAL Terminal Integration Plan – WP6 – East Airfield Building Relocation  
**McConnell Dowell Constructors**
- 92 Ngā Hau Māngere – Old Māngere Bridge Replacement  
**McConnell Dowell Constructors**
- 94 Glen Innes to Tamaki Drive Sections 2 and 3  
**Oxcon CLL**

## CATEGORY 5

Projects with a value of greater than \$100m

- 96 Hamilton section of the Waikato Expressway  
**City Edge Alliance**
- 98 Peka Peka to Ōtaki Expressway  
**Fletcher Construction Company**
- 100 Northern Corridor Improvements  
**Northern Corridor Improvements Alliance**
- 102 Physical Works Panel – Safety  
**Fulton Hogan**
- 104 Napier Port Te Whiti 6 Wharf Construction  
**HEB Construction**

## CATEGORY 6

Maintenance & management of assets

- 106 Auckland Transport West Urban Road Maintenance Contract  
**Fulton Hogan**
- 108 Hastings District Council Rural Road Maintenance Contract  
**Fulton Hogan**
- 110 Coastal Otago Network Outcomes Contract  
**Downer NZ**
- 112 Tasman Alliance  
**Downer NZ**
- 114 Major Associate Award



## Z People Awards

Outstanding achievements within the civil construction industry

- 117 Z Emerging Leader Award
- 120 Z Personal Improvement Award



## Connexis Civil Industry Training Awards

Building business through people

Turnover up to \$10m

- 125 AWF
- 126 Odium Group
- 127 Topline Contracting

Turnover between \$10m and \$100m

- 128 ICB Retaining and Piling
- 130 Pipeline & Civil
- 131 Waipa Civil

Turnover of \$100m and over

- 132 Brian Perry Civil
- 133 HEB Construction
- 135 Judges citations for the winners



Civil Contractors NZ established the Construction Excellence Awards in 1978 as a means of recognising excellence in the civil engineering, construction, maintenance and contracting industry. Hirepool has been a proud sponsor of the awards since 2003.

Civil contractors who are members of CCNZ compete for the awards annually. The winners are presented with their award at a gala awards dinner held in conjunction with CCNZ's annual conference.

In 2023 the annual conference and awards were held on 30 August - 1 September 2023 at Due Drop Events Centre, Manukau, Auckland.

# Celebrating construction excellence

judges highly commended and winning commentary summary

We thank the awards judges: Category 1, 2, 3 and 6 **Dave MacDonald** and **Tim Ford**; Category 4 and 5, **John Bryant** and **Brian Warren**. Their comments on the winning entries are summarised here.



## CATEGORY 1 • WINNER

### Isaac Construction – Matipo Street Rail Crossing Renewal

PROJECTS WITH A VALUE OF UP TO \$2 MILLION

A four-track road crossing removal and upgrade, delayed to midnight by an NPC home semifinal, all completed within a 77-hour rail line closure is something special.

A whole of project wet weather roof covering was developed, tested and available. The project timetable set targets at 15-minute intervals, and was used during the works to track progress and take action. Comprehensive community liaison ensured line closure was best, and the

community understood what was happening and that its needs were met.

The rail crossing removal and improvement was completed within the block of line, from sub-pavement, concrete slabs and rails and pavement to the signals and communications network. It's amazing that this was Isaac Construction's first job for KiwiRail, and it paves the way and inspires trust for a good working relationship.



## CATEGORY 1 • HIGHLY COMMENDED

### Interflow Pty – Waimea Inlet Sewer Line Recommission

PROJECTS WITH A VALUE OF UP TO \$2 MILLION

In looking for more capacity in the sewer system the Nelson Sewerage Business Unit had the option of laying a pipe across the Waimea Estuary or potentially using an abandoned 525mm asbestos line that they knew nothing about its condition. In came Interflow Pty with an option of relining the existing 1.1 km pipe. With smart thinking and construction techniques this could be achieved with no need for a resource consent, would be completed with no risk to the pristine environment, far less Health and Safety concerns and save the client in the order of \$4 million plus.

During the pre-construction ECI phase Interflow worked with the client and their consultant to de-risk the construction and to ensure the German made Primus line

could be installed. The existing pipe was videoed, a pig pulled through to clear any debris and through successive pulls a line wire capable of pulling the 1.1 km lining was installed. The liner is made of a Kevlar inner and with an outer and inner layers of PE.

The local sub-contractor Ching Contracting assisted in getting the site ready at both ends, install precast thrust blocks and complete the connection once the liner was installed. The liner was successfully installed in a single pull, that was the longest carried out in Australasia, inflated and pressure tested with water. An innovative product saved the very happy client many dollars and hours of worry and time that the alternative would have taken. Well done Interflow.



**CATEGORY 2 • WINNER**

**Connell Contractors – Poutu Intake and Tunnel Erosion Repair Works**

PROJECTS WITH A VALUE OF BETWEEN \$2 MILLION AND \$5 MILLION

The riverbed intake and 2.7 km tunnel for taking water from the Tongariro River to power the Tokaanu Power station suffered significant erosion damage caused by river gravels, sediment and rock over the course of its 50 years of operation.

This complex restoration project for Genesis Energy was remote, in a restricted confined space, in high-risk working conditions, with strict environmental controls to protect the Tongariro from any pollution. Connell Contractors had to be nimble to do the work during a

brief six-week period of low power demand when the facility could be closed down.

Due to high water in the tunnel, Connell Contractors adapted initial plans to create water diversions around each repair and use a rock bond bagged concrete mix for the repair. The client found the team showed excellent passion, innovation, commitment and collaboration to get the job done.

This was truly an excellent effort to restore a vital part of NZ’s vital power generation system.



**CATEGORY 2 • HIGHLY COMMENDED**

**Downer NZ – Waiwaka Terrace Stormwater Culvert**

PROJECTS WITH A VALUE OF BETWEEN \$2 MILLION AND \$5 MILLION

During a routine inspection NPDC discovered that an-old storm water culvert with a sewer running inside it had severely collapsed requiring urgent remedial work.

The Infrastructure Partnership under an NEC 4 contract (between NPDC and Downer) immediately started to develop a methodology and design with WSP to repair and strengthen the damaged culvert.

The location of the line included a section under a shared driveway to two properties with houses very close by. The solution developed included replacing the severely broken section (which was under the driveway), strengthen and line with a CIPP liner the remaining culvert under Waiwaka Terrace and SH 3, upgrade other pipes that feed into the culvert and realign the sewer to outside the culvert over part of its length.

This was a very complex project involving a very limited access and confined work space, working in a residential

area, strict noise and vibration controls, the need to protect adjacent gardens, managing potential flooding on site and maintaining storm water and sewer flow during the work.

For the sheet piling to create the very confined work area for the replacement of the culvert Downer used a method requiring predrilling the alignment and hydraulically pressing the sheets into place which ensured little to no vibrations and very reduced noise effects.

The existing Partnership between the Council and Downer enabled the work to be carried out immediately through the ECI process and payment methodology imbedded in the relationship.

These complex works were completed very efficiently and all the issues that effected the immediate neighbours and the close community were dealt with in an empathetic way bearing in mind the huge disruption and concerns of the two immediate neighbours. A job very well done.



**CATEGORY 3 • WINNER**

**Fulton Hogan – 48 Day State Highway Remediation Project**

PROJECTS WITH A VALUE OF BETWEEN \$5 MILLION AND \$20 MILLION

Intense rainfall triggered a regional state of emergency, with State Highway 6 between Nelson and Blenheim rendered impassable and closed to allow repairs to be completed and improve the network resilience. The local team of Fulton Hogan and WSP took on the challenge to design and rebuild several major structures before Christmas 2022.

Designs were customized around resource availability, minimizing potential delays. Project scope expanded as milestone points were delivered early. Twenty thousand

cubic metres of spoil was removed, long-term river protection installed and the road realigned.

Residents were also escorted via forestry roads, allowing them to travel as required. And a local labour force of 120 staff including subcontractors supported by Waka Kotahi, Fulton Hogan and WSP achieved in seven weeks what would normally have taken 18 months to complete.

The project was successfully completed on budget and officially opened to the public on 18 December ahead of the Christmas holiday period.



**CATEGORY 3 • HIGHLY COMMENDED**

**Brian Perry Civil – Porirua Wastewater Treatment Plant: Hydraulic Upgrade & Milliscreen Channel Remediation**

PROJECTS WITH A VALUE OF BETWEEN \$5 MILLION AND \$20 MILLION

Brian Perry Civil was initially engaged to review an option for upgrading the treatment plant at Wellington Water’s wastewater treatment plant at Porirua. But through an early contractor involvement process, an alternative design removing the requirement for expensive temporary works was devised, also removing the risk of discharge into the ocean and saving the client around a million dollars on the spot.

The final design and construction incorporated the best parts of other viable options and added a containerized

screening process, a new full bypass system capable of screening all raw sewage prior to entering the plant, a new containerized screening system to manage all flows into the plant and a safer working methodology. It also removed the possibility of the plant discharging untreated sewage into the ocean.

The project was completed with no disruption to the Wellington Water plant operating contractor Veolia - a great outcome, a happy client, and a project worthy of commendation.



**CATEGORY 4 • WINNER**

**Oxcon CLL – Te Ara Ki Uta Ki Tai – Shared Path of land and Sea**

PROJECTS WITH A VALUE BETWEEN \$20 MILLION AND \$100 MILLION

This was a joint initiative between Auckland Transport and Waka Kotahi to construct a new shared path between Auckland’s eastern suburbs and Waitemata Harbour’s southern shores. This included 900 metres of elevated boardwalk through a Significant Ecological Area and a coastal marine area, two large super tee concrete bridges and one crossing of the main trunk railway line.

The quality standards for the final asset are of a very high standard. This was achieved with effective planning, innovative thinking, skilled people and a high performing

team. The contract engaged the whole company where everyone worked closely together. Sub-contractors and labour hire staff were treated as employees. The project’s culture and leadership was a highlight.

The judges were impressed that even in a competitive tender, high levels of collaboration and innovation were achieved. This contract was a landmark project for the Oxcon CLL team, who proved the decision to award the contract a great success, and constructed a shared pathway that is a great outcome for the client, contractor and the community.



**CATEGORY 5 • WINNER**

**HEB Construction – Napier Port Te Whiti Wharf 6**

PROJECTS WITH A VALUE OF GREATER THAN \$100 MILLION

Napier Port needed to build the new Te Whiti Wharf 6 to accommodate more and larger cargo and cruise ships and improve the operational performance of the port. The Napier Port owners reputation was very much on the line as it embarked on this new private investment,

HEB Construction was engaged by the Napier Port to work with their design partner Beca in an ECI arrangement. HEB progressed to construction main contractor thanks to funding through an IPO that meant the project was under high public scrutiny.

The project is the largest wharf to be constructed in New Zealand’s recent history. It is 390 metres long and 34 metres wide. The team constructed a 1.1 metre thick deck supported by over 400 piles installed to a depth of 45 metres. Revetment works involved importing and placing 50,000 tonne of rock and installing 4,500 custom made blocks weighing up to 18 tonnes.

The Napier Port Board is immensely proud of the new wharf.

The judges were impressed by how all parties engaged in the ECI process and clearly worked at all levels as One Team throughout the entire project. The process was a great example and entailed all aspects of Value Adding

Engineering, risk sharing, environmental challenges to be managed, and a fully operational port. There was clearly a high level of stakeholder engagement needed throughout the project and this was achieved.

Other impressive achievements were

The ability to safely work in and protect the marine environment; at depth, unknown seabed conditions, and complex temporary works requirements and sensitive environments.

The highly technical and complex solution for the construction of the revetment works. The collaboration between all parties meeting every problem as a challenge and opportunity.

The judges congratulate HEB Construction and their client Napier Port for winning the Category 5 Hirepool Construction award.

They collaborated to deliver this complex and innovative project under the agreed budget parameters and 7 months ahead of schedule and everyone was kept safe and grew from the experience. In what was a very challenging, resource constrained and uncertain time. The outcome is quite remarkable.



**CATEGORY 6 • WINNER**

**Fulton Hogan – Hastings District Council Rural Road Maintenance Contract MAINTENANCE**

When Cyclone Gabrielle devastated the Hawkes Bay area in February 2023, Fulton Hogan mobilized every piece of plant, equipment, and team member alongside the NZ Army to make safe the roading network.

More than 120 road closures were mobilised and secured. Flooding was managed and slips cleared. No less than sixteen bridges rendered unusable needed close attention. More than 90 separate crews, (numbering 400 to 500 people including subcontractors) were mobilized to respond.

With no power or cell phone coverage available, communication was a priority for Civil Defence and Council. Fulton Hogan became a critical stakeholder link

keeping regulatory authorities up to date with events as they unfolded in the community.

Aside from the key role in disaster response and recovery, Council and feedback from the community confirms Fulton Hogan’s performance over 14 years has improved year on year – and particularly through the contract assessment.

The judges congratulate Fulton Hogan and its subcontractors on demonstrating true excellence in the maintenance and management of assets, and for answering the call and restoring the local roading network across the Hastings District area as first responders for the community through a catastrophic natural disaster.

# BIG CONGRATS!

Let’s hear it for all the category winners and finalists in the 2023 CCNZ Hirepool Construction Excellence Awards. We’re always stoked to be involved with epic projects like these and seeing them come to completion.

Talk to us about how we can help with your next project.



# An ambitious feat of infrastructure

PROJECT: **Tauherenikau Suspension Bridge – Design and Construction**

CONTRACTOR: **Abseil Access**

CLIENT: **Greytown Trails Trust**

VALUE: **\$93,000**

**With the 165m Tauherenikau Suspension Bridge construction project, the Greytown Trails Trust achieved an ambitious infrastructural feat in Featherston.**

Working in collaboration with consultant Malcolm Nielson and contractor Abseil Access, the team successfully constructed an 85m boardwalk and bridge foundations, culminating in the completion of the Tauherenikau Suspension Bridge. Funded through a secured grant of \$1 million, planning for the project began in 2015, with the location finally confirmed in 2020. Construction commenced in January 2022 and was completed by April 2022. A crucial addition to the region's transport network, the Tauherenikau Suspension Bridge signifies the power of dedicated collaboration in public service development.







# Waikato control gate flood protection

PROJECT: **Lake Waikare Control Gate**

CONTRACTOR: **Brian Perry Civil**

CLIENT: **Waikato Regional Council**

VALUE: **\$1.2m**

**Steeped in rich history and faced with environmental challenges, the Lake Waikare Control Gate Refurbishment exemplifies Brian Perry Civil's commitment to delivering resilient infrastructure and the preservation of local heritage.**

Located on Ruahine Road east of Te Kauwhata, this complex \$1.3 million project was commissioned by the Waikato Regional Council. With an intricate blend of innovative planning and BPC's technical capability, the project ran from March 2022 to May 2023, encompassing everything from temporary stoplog construction to the ingenious use of an Aquadam for floodgate refurbishment. Undertaken at the site of the significant Battle of Rangiriri, this was not just a technical project, but needed to respectfully acknowledge the historical intersection of Māori chiefs and the British military. Balancing the high toxicity of the lake and high-stakes safety risks, the project demanded significant engagement with local iwi and public stakeholders, all while navigating unpredictable weather patterns.

This vital initiative is a testament to technical expertise, environmental stewardship, and smarts to maintain control over Lake Waikare's water levels as part of the Waikato Flood Protection Scheme. Successful delivery also means ongoing protection of local fauna and flora and the mitigation of environmental risks, safeguarding the health of the region for future generations.



# Culvert replacement reconnection

PROJECT: State Highway 22 Culvert Upgrade

CONTRACTOR: Downer NZ

CLIENT: Waikato District Council

VALUE: \$260,000

Downer New Zealand delivered this project as part of the maintenance programme for the Waikato District Alliance, a collaborative working agreement between Downer and Waikato District Council to provide road corridor maintenance services across the region.

The State Highway 22 Culvert Upgrade was to replace a deteriorating Armco culvert with a larger box culvert. The project encompassed four key elements: a temporary road diversion, roadside swale diversion, coffer dam construction, and culvert replacement. This upgrade addresses maintenance and resilience issues on a section of the rural road network in Pepepe, West of Huntly. The site had several challenges due to its remote location, difficult ground conditions, poor drainage and vulnerability to flooding. It was the only transportation link for several properties in the area, with no alternative routes. Construction was completed in early March 2022



under budget and within a strict delivery programme to ensure the culvert was operational before the wet winter season. Important features of the work included collaboration and consultation with a key stakeholder (also a Waikato District Councillor) to plan and construct a temporary road diversion, and engagement with an ecologist to relocate fish species disrupted by the temporary stream diversion.





# Bailey bridge to the rescue

PROJECT: **Rissington Bailey Bridge project**

CONTRACTOR: **Fulton Hogan**

CLIENT: **Hastings District Council**

VALUE: **\$750,000**

**When Cyclone Gabrielle struck Hawke's Bay with devastating force in mid-February 2023, leaving damaged bridges and culverts, buried roads, significant dropouts, and isolated communities in its wake.**

The Hastings District Council called on Fulton Hogan to help with urgent relief efforts and work to reconnect the community of Rissington.

The Hastings District Council took

a real team approach, and together with WSP as designer, Fulton Hogan and various subcontractors sprang into action to construct and launch a temporary Bailey bridge. Work commenced on the 6 March and was completed by Friday 31 March, the temporary Bailey bridge was opened largely thanks to a display of true industry collaboration, re-connecting the small farming town of Rissington with the wider community.

# Mountaintop cableway anchors aid construction

PROJECT: Mount Messenger

Cableway Anchors

CONTRACTOR: Groundfix

CLIENT: Mount Messenger Alliance

VALUE: \$489,000

As part of the construction of Te Ara o Te Ata: Mt Messenger Bypass in North Taranaki, Waka Kotahi NZ Transport Agency and its partners, The Mt Messenger Alliance (HEB, Downer, Tonkin + Taylor and WSP) are constructing a cableway to aid in the development of the new road.

The cableway is anchored to the hillside via high capacity multi strand anchors. Groundfix was challenged with the task of installing these anchors in a very remote and topographically challenging area with trial works commencing in March 2022 and final production works in December 2022.





# Teaching old pipes new tricks

PROJECT: **Waimea Inlet Sewer Line Recommission**

CONTRACTOR: **Interflow Pty**

CLIENT: **Nelson Regional Sewerage Business Unit (NRSBU)**

VALUE: **\$1.4m**

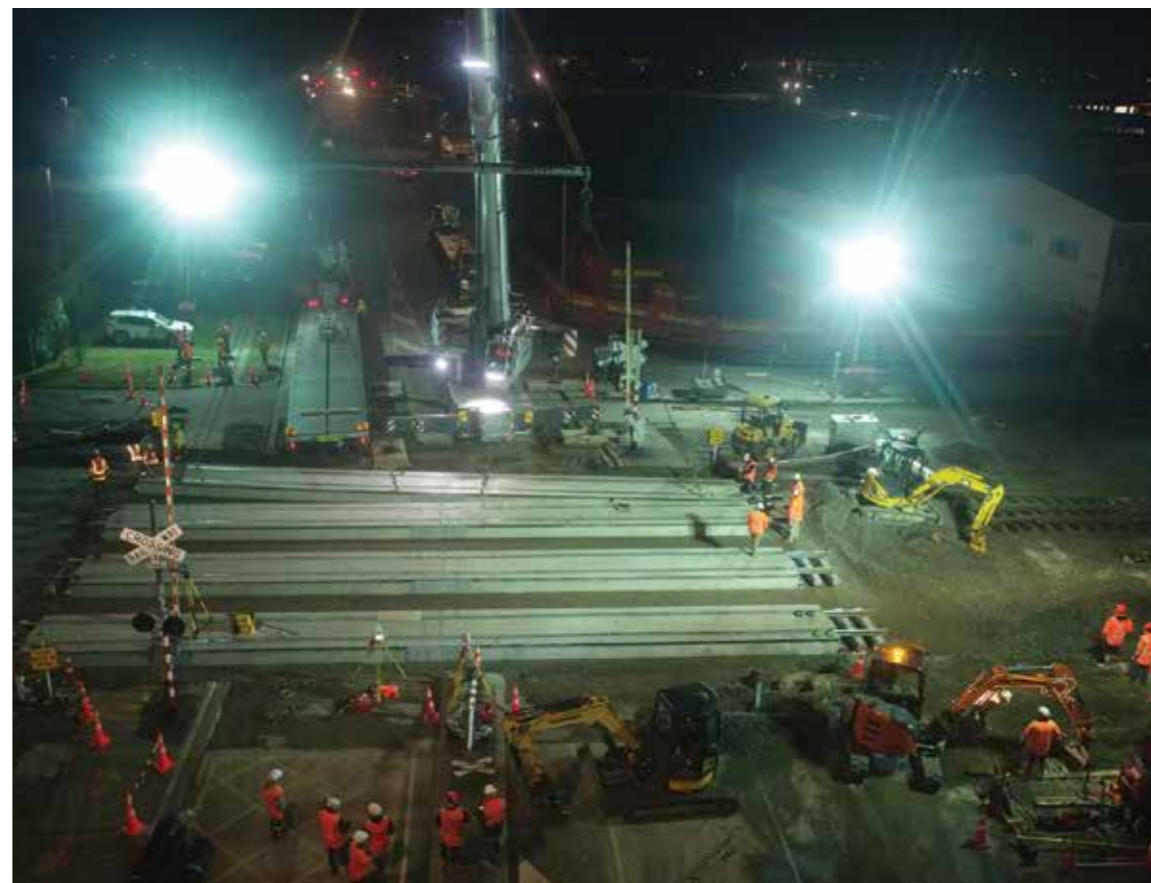
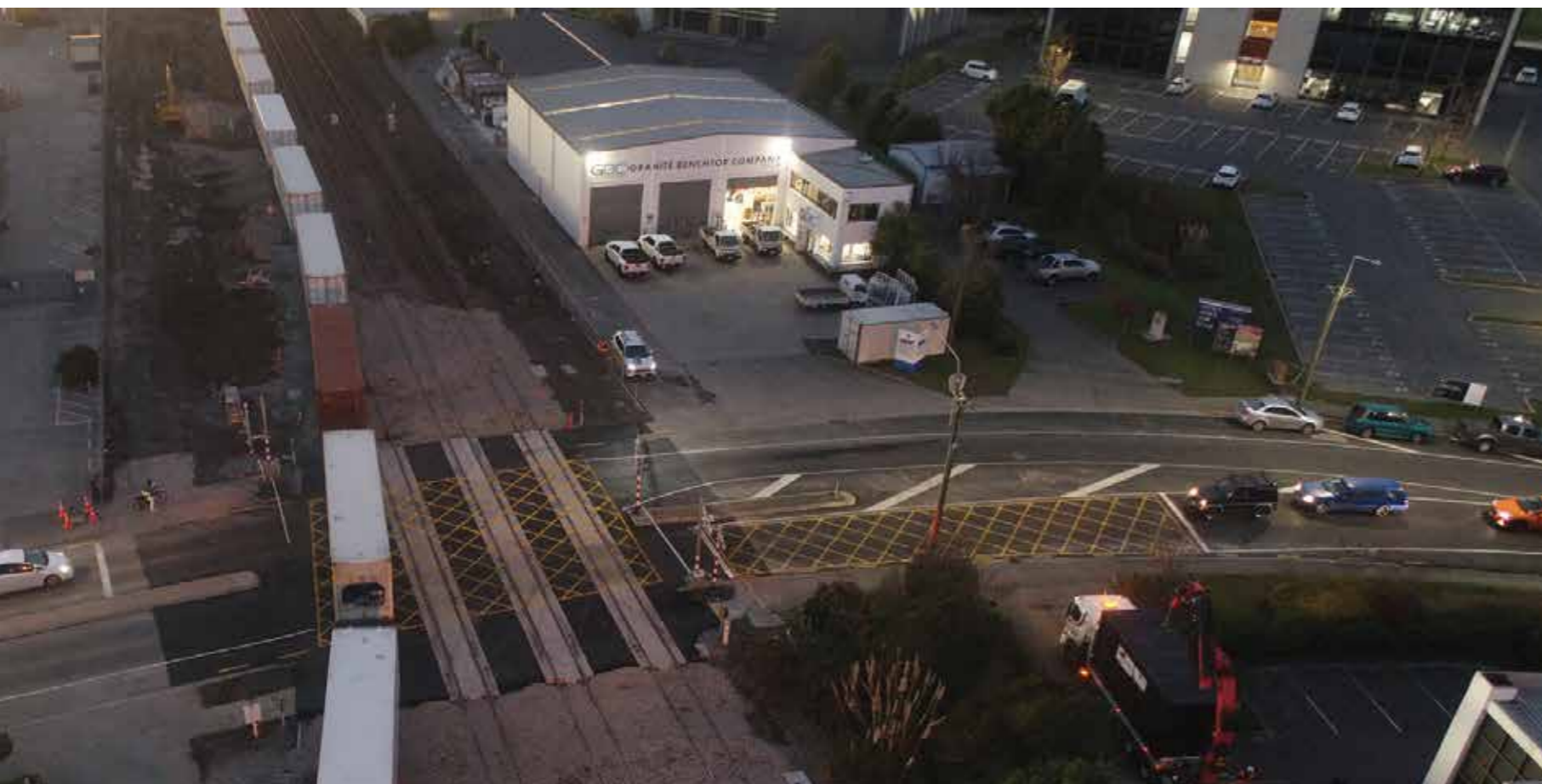
**The Nelson Regional Sewerage Business Unit faced a problem: continued housing growth within the catchment was putting pressure on rising mains, which were in turn experiencing overflows during wet weather events.**

The mains border the Waimea Inlet, a tidal lagoon with high ecological value in Nelson. Urgent action was needed to improve the reliability of Nelson’s wastewater service and to protect the Waimea Inlet. The selected solution was to use Primus Line to recommission a 1.1km section of sewer that ran directly under the Inlet and had been out of service since 2007.

In an open and collaborative arrangement, Interflow worked with

the client, its engineering partner, Beca, experts from Primus Line, and their subcontractor, Ching Contracting, to scope, plan and deliver this ambitious project. While 12 months were spent on careful planning and risk assessment, the works were delivered in just three weeks between April 4 and May 11 in 2022.

The liner was installed in a New Zealand-first single pull of 1.1km, eliminating the need to perform any works within the inlet. Through creative planning and open collaboration, an old pipe was given a second life in a record-breaking solution to the problem.



# Fast turnaround on key upgrade

PROJECT: **Matipo Street Rail Crossing Renewal Christchurch**

CONTRACTOR: **Isaac Construction**

CLIENT: **KiwiRail**

VALUE: **\$1.7m**

Classified as KiwiRail’s largest multiple renewals upgrade within the South Island, Isaac Construction was commissioned to complete this incredibly tight and technically challenging project in a highly constrained working environment within just a 77-hour ‘Block of Line’ timeframe.



A key consideration that could impact the success of this project was the risk of an overrun. Closure of the rail-line could not be postponed due to the high level of coordination, planning and loss of potential income, so it was important the team planned for any and all conditions the weekend might give them – including weather. To mitigate this a temporary roof structure was also built.

The success of this project can be attributed to Isaac Construction’s extensive early contractor involvement (ECI), detailed hour-by-hour planning (with contingency plans), coordinated and detailed traffic diversion and management of over 5000 vehicles per day, plus KiwiRail and HSQE requirements to the highest standards.

Partnering with KiwiRail through this highly collaborative ECI involving the client, crews and subcontractors, project efficiencies were found with a variety of strategic design changes. This success is reflected in the results, with the project, with zero harm achieved, running 24 hours a day for three days from 7:00pm 27 May and finishing at 6:00pm 30 May 2022 – and all delivered six hours ahead of schedule.

# Bridge replacement reopens SH39

PROJECT: State Highway 39 Mangaotama Stream Bridge Replacement

CONTRACTOR: Oxcon CLL

CLIENT: Waka Kotahi NZ Transport Agency

VALUE: \$1.5m

**Oxcon CLL replaced the State Highway 39 Mangaotama Stream Bridge superstructure of a single-span steel girder concrete-deck bridge located at Ngāhinapōuri, about 20kms southwest of Hamilton for Waka Kotahi.**

designer Beca to deliver an exceptional project outcome. Disruption to road users was minimised by demolishing the old bridge and installing the new one, all within a two-week highway closure.

Though the overall construction project spanned four months, between February and June 2022, the critical programme elements were to remove the old bridge superstructure, install the new deck, and construct safe approaches during a prescribed two-week closure of SH39 before the end of June.

The former bridge superstructure was nearing the end of its life and was subject to temporary speed and weight restrictions. The approach works consisted of backfilling behind the new bridge, widening the shoulders (a late change to the project scope), paving, repositioning two fibre optic lines, and upgrading the barriers.

Oxcon CLL worked closely with Waka Kotahi NZ Transport Agency and the lead





# Te Reinga repairs reopen remote region

PROJECT: **Te Reinga Bridge**

CONTRACTOR: **Quality Roading and Services (Wairoa)**

CLIENT: **Wairoa District Council**

VALUE: **\$200,000**

**After significant weather events battered the Wairoa District in March and early April 2022, two bridge piers on Te Reinga bridge subsided and there was a bow in the bridge deck. Consequently, the bridge was closed until temporary repairs could be completed.**

The bridge is the main link to Wairoa and Gisborne for people living and working in the Ruakituri area, who faced an hour and half drive to get just a few hundred metres to the other side of the bridge. Aware of the significant impact to residents and road users, WDC made a three-pronged priority approach to repair the existing bridge, restore pedestrian and, potentially, light vehicle access.

Bespoke steel brackets were installed under the bridge deck and Reidbar was tensioned between the piers and

the brackets. Once tensioned, the next challenge was to load test the bridge. With some true kiwi ingenuity, the QRS team sourced two swimming pools to emulate the weight the structure needed to cope with. These swimming pools were erected on the bridge and filled incrementally using pumps and water tankers.

Collaboration between WDC, WSP, QRS and Fulton Hogan saw temporary repairs completed and the bridge reopened to light vehicles just five weeks after closing.

The recognition of this innovative project to brace a vital transport and freight link and restore it to action is bittersweet, as the bridge was later irreparably damaged by the impacts of Cyclone Gabrielle.

The team's thoughts remain with the Te Reinga, Ruakituri and Tiniroto communities affected by the damage.



# Boardwalk brought back to life

PROJECT: **Paihia to Opua Coastal Walkway – Stage 1**  
**Bridge and Boardwalk Replacement**

CONTRACTOR: **Steve Bowling Contracting**

CLIENT: **Far North District Council**

VALUE: **\$345,000**

**A wooden boardwalk and bridge, located at the entrance of the Paihia Road to Opua Coastal Walkway, off State Highway 11, just south of Paihia, had been seriously damaged by rot and marine worms, bringing about the effective closure of the entire walkway for 12 months.**

To fix the problem, the Far North District Council commissioned Whangarei-based Steve Bowling Contracting, known for its focus on civil engineering structure construction, and consultants Framgroup.

Between October and December 2022, the works were approached in an innovative way by the contractor by maximising the off-site manufacture of the boardwalk components and identifying a way to install the bridge by floating plant, minimising the environmental impact of the project and resulting in an incredibly attractive scenic boardwalk. The finished project is something the company is proud of, and the workmanship of the finished product is a testament to the team undertaking the works.





# Recreation site for future generations

PROJECT: **Alfred Cox Skate Park Redevelopment**

CONTRACTOR: **Angus McMillan Concrete and Currie Construction**

CLIENT: **Tairawhiti Adventure Trust**

VALUE: **\$3m**



The Alfred Cox Skate Park, also known as the Gisborne Skate Park which can be found a short walk from Gisborne's Waikanae Beach, was the brain child of the Tairawhiti Adventure Trust and the local community with land provided by the Gisborne Council.

The trust approached skate park designer Richard Smith to complete the design and very quickly the team of Currie Construction and Angus McMillan Concrete was formed to bring their ideas to life. The Alfred Cox Skate Park is the first project of the Tairawhiti Adventure Trust, the aim being to upgrade the facility to a modern and international standard to give opportunity for current and future generations to grow and develop in their respective sports; they achieved this and so much more with the finished park.

The project started in September 2021 and was open to the public in September 2022.



# Three waters across three sites

PROJECT: **Blenheim Major Sewer Upgrade Pump Stations**

CONTRACTOR: **ARC Projects**

CLIENT: **Schick Civil Construction (Marlborough District Council)**

VALUE: **\$2.5m**

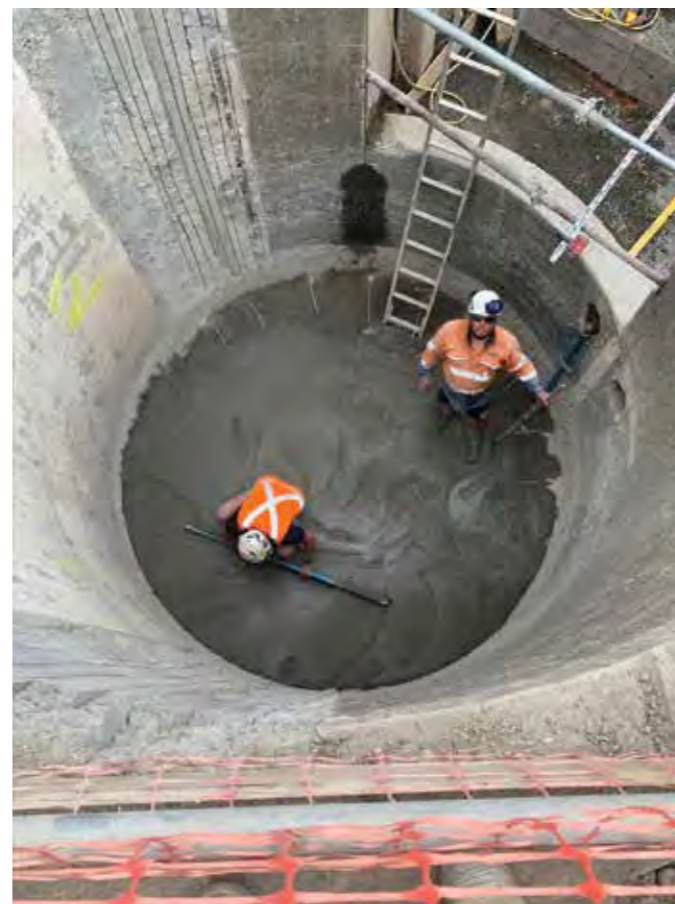
**ARC Projects was contracted to construct three new pump stations replacing existing stations throughout Blenheim, as part of the Blenheim Major Sewer Upgrade scheme being carried out by the Marlborough District Council between January 2021 and May 2022. The three stations were located at Budge, McLauchlan and Bomford Streets.**

Construction of the Budge Street pumpstation involved demolishing the existing station and installing a new glass reinforced plastic pump station inside the existing concrete caisson. First though, a new temporary station had to be constructed to allow decommissioning and demolition of the existing station to start.

McLauchlan Street was also an upgrade

to an existing station and was built adjacent to the existing station. It included significant building and siteworks components.

Bomford Street was the keystone site of the project, unique in that the site carries out both waste and stormwater pumping as well as treatment. The station comprises a wastewater pumpstation, a stormwater pumpstation and a wastewater bypass treatment plant. Two seven-metre deep wet wells, four in-situ concrete chambers to house the mechanical pipe work, UV reactor, drum screen and stormwater bar screen were features of the build. The site required a significant amount of in-situ concrete work (over 250m<sup>3</sup>) that was completed in-house, from fixing reinforcing steel, constructing the forms and pouring all structures.





# Sporting project gives Taranaki a quick win

PROJECT: **Yarrow East Stand Project**  
 CONTRACTOR: **Brian Perry Civil**  
 CLIENT: **Taranaki Regional Council**  
 VALUE: **\$2.6m**

**The Yarrow Stadium project in Taranaki, for Cleland Construction, stands as a testament to overcoming construction challenges, innovation, collaboration, and exceptional safety and quality control.**

Facing unique obstacles, including seismic threats and unusual soil profiles, BPC executed innovative piling solutions while maintaining high safety standards.

This included the strategic use of longer casing to bypass problematic soil layers and meticulous maintenance of polymer density and viscosity. BPC's resilience, problem-solving approach, and commitment to quality, coupled with successful cooperation, resulted in a timely completion of the project.

BPC's remit ran from 29 September 2022, and completed its piling works on 11 November 2022 – three days ahead of schedule.





# Rocky repairs for hydro works

PROJECT: **Poutu Intake and Tunnel Erosion Repair Work**

CONTRACTOR: **Connell Contractors**

CLIENT: **Genesis Energy**

VALUE: **\$2.3m**

**Genesis Energy’s Poutu intake is a riverbed water diversion structure in the Tongariro Hydro Scheme, approximately 17km south of Turangi.**

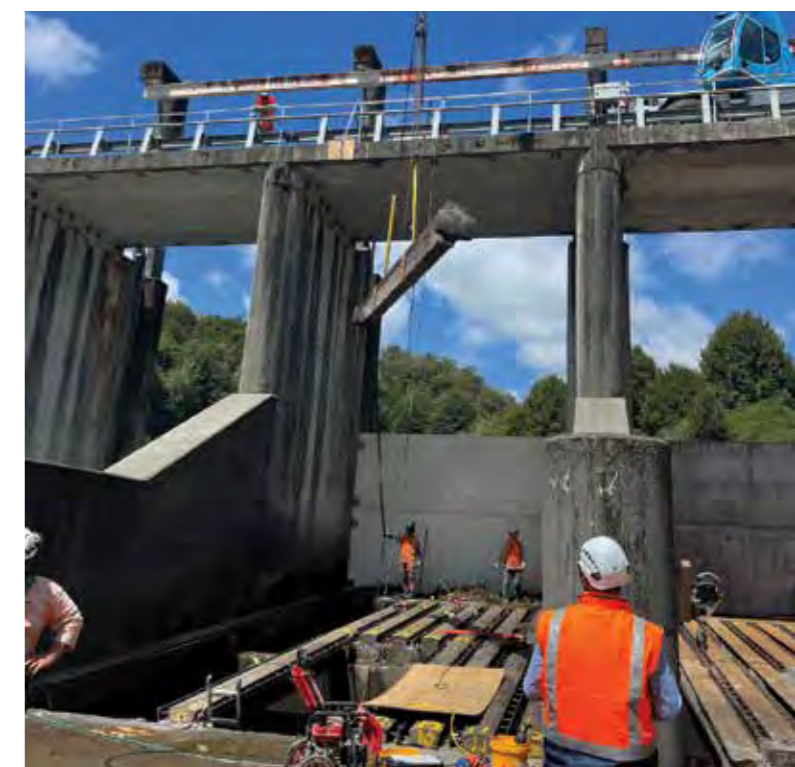
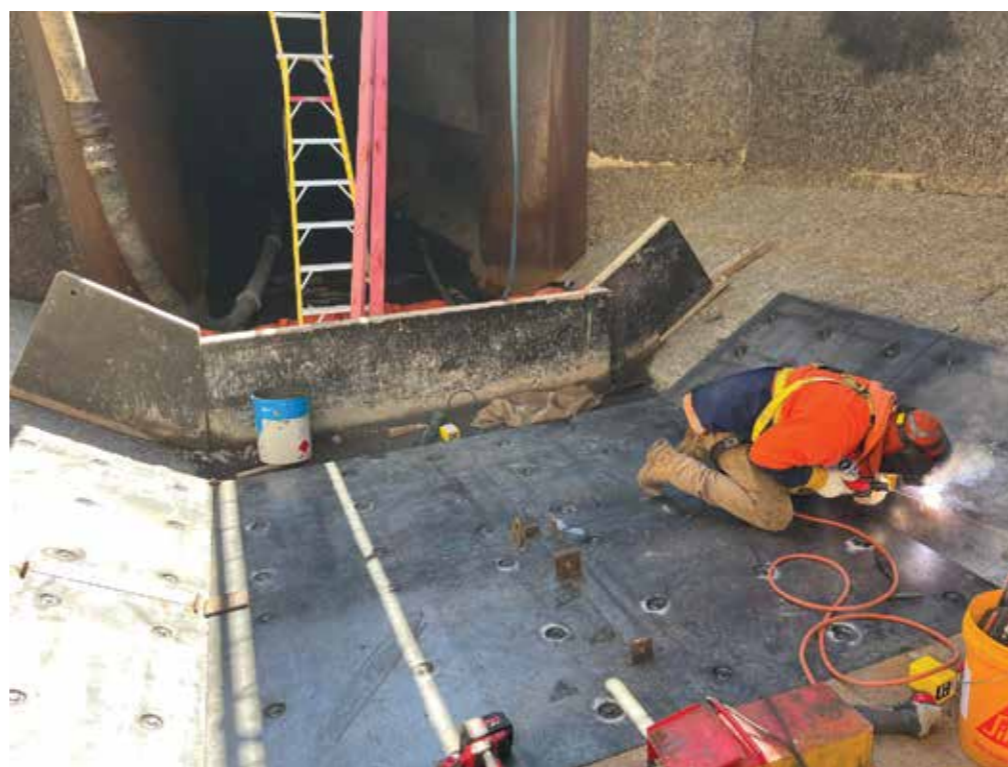
The intake abstracts a portion of flow from the Tongariro River through low-level intake screens of four intake bays, passes it through a series of channels and chambers to the Poutu Tunnel and canal downstream. An inspection was conducted in 2021 which revealed several structures within the intake and tunnel had suffered significant erosion damage through the continued passage of river gravels, sediment, and rock.

Genesis Energy engaged Connell Contractors to undertake the repair works over a six-week outage between January and April 2023. The scope of work included repair and protection work on

four intake bays and tunnel invert repairs across 2.74km of tunnel with a 2.5m radius.

In the words of the team, “Connell Contractors successfully delivered these works in a high-risk environment working inside the tunnel in confined spaces within a short time frame, while protecting the river and managing complex craneage. We demonstrated agility and innovation throughout, often changing our methodology to address the multiple challenges, worked collaboratively with client Genesis and project stakeholders – including consultants WSP, all while upskilling our team in specialist skills to undertake the work packages safely and successfully.”

In short, an excellent civil construction project.



# Robust pre-design saves time and money

PROJECT: **Rosedale Sludge Screens**

CONTRACTOR: **Fulton Hogan**

CLIENT: **Watercare Services**

VALUE: **\$2.3m**

**The Rosedale Wastewater Treatment Plant, near Albany on Auckland's North Shore, is the second largest treatment works in the Auckland region and is among the largest in New Zealand, providing primary, secondary and advanced treatment of effluent for approximately 185,000 people.**

It was commissioned to be upgraded to provide additional capacity to cope with predicted population increase. The project required a new Thermal Hydrolysis facility to be built, which itself then needed a new sludge screening system.

Watercare engaged Fulton Hogan early for a procure, design-build approach to deliver temporary sludge screening

upgrades. The project commenced in June 2019 and was completed in December 2022.

But what makes this project special is the design and build procurement model which was redefined by a robust pre-design phase. Watercare and Fulton Hogan brought designers, installers and specialist screen suppliers together at project inception, well before a final design was agreed. Key elements of design and build were determined during this early phase including 'best for project cost' and robust time vs value analysis on carbon reduction opportunities. It just goes to show what's possible when clients, contractors and designers take a collaborative approach to projects.





# Improving safety in a high traffic, heritage area

PROJECT: **Mission Bay Town Centre Upgrade**

CONTRACTOR: **Fulton Hogan**

CLIENT: **Auckland Transport**

VALUE: **\$5m**

**The Mission Bay Town Centre Upgrade demonstrates how a high-profile, complex project in a highly trafficked route through one of Auckland's most prestigious neighbourhoods can be delivered successfully, under intense scrutiny from a multitude of stakeholders and complex traffic management and construction challenges.**

The Fulton Hogan, Auckland Transport and WSP team collaborated to implement a series of safety improvements to create a safer experience for pedestrians, cyclists, and motorists. It also aimed to promote active transportation options and provide a more attractive environment for residents, visitors and businesses.

Consisting of an 800m separated cycleway, nine speed tables, coloured pavers at key areas, it also saw the first use of innovative concrete cycle separators created in-house by Fulton Hogan.

Heritage trees and structures, a constrained work area, and the need to minimise disruption demanded exceptional planning, coordinated delivery and project team collaboration.

The most complex of all the safety projects in Auckland Transport's Vision Zero safety programme to date commenced on 20 April 2022, taking six months with multiple crews working 24/7 over the final weeks, successfully completed in time for the Labour Weekend.

# Cliff-front stabilisation a sensational success

PROJECT: **Ngaio Gorge Slope Stabilisation Improvements**

CONTRACTOR: **Geovert**

CLIENT: **Fulton Hogan**

VALUE: **\$2.2m**

**The Ngaio Gorge Slope Stabilisation Improvements project in Wellington proved to be the ultimate slope stabilisation challenge.**

Designed by AECOM and led by Fulton Hogan for Wellington City Council, this site was notorious for high-risk ground conditions, which would stretch the capabilities, ingenuity, and tenacity of Geovert, which was subcontracted as the slope stabilisation specialist.

Scope included stabilisation of steep cliff-front slip sites requiring installation of anchors, rockfall mesh, rockfall attenuators and several rockfall barriers. The technical complexity and challenges on this project called for exceptional people and exceptional expertise in slope stabilisation – Geovert’s core competency.

Due to these multiple challenges Geovert recognised that this project would truly test and develop the capabilities of its team, methodologies, and equipment. And it did!

Geovert successfully delivered this project safely and ahead of schedule with the added benefit that every person on the team experienced exponential growth in experience, knowledge, skills, and teamwork. With slope stabilisation now key to the resilience of New Zealand's infrastructure in an ever-changing environment, Geovert not only carried out the work safely and successfully, but demonstrated its commitment to developing its people, as well as innovative solutions.

Geovert's works commenced in October 2021 and finished in March 2023.







# Weather shows need for stormwater project

PROJECT: **Hoon Hay Basin Outlet and Cashmere Stream Control Structure**

CONTRACTOR: **GSL**

CLIENT: **Christchurch City Council**

VALUE: **\$3.7m**

**The Hoon Hay Basin Outlet and Cashmere Stream Control Structure is one of multiple Christchurch City Council Land Drainage Recovery projects converting 109ha of the Eastman Sutherlands Basin into a \$50m Stormwater Treatment Facility called ‘Te Kuru’ designed to reduce flooding to downstream Heathcote River.**

In January 2021, a GSL-led team (Martin Civil, Instream Ecology and Advanced Tree Services) started construction of a twin 1050mm piped siphon under the Cashmere Stream, an actuator/penstock gate control structure, realignment of two drains, 500m embankment and spillway.

Construction was high risk, involving excavation

into a high-water table, underlying pressurised aquifer system with volatile ‘Blue plug’ soils non-conductive to heavy structures and one of the wettest construction seasons ever. An artesian aquifer was intercepted, followed by a 100-year flood event in June that tested the 70 percent-complete siphon. Council requested additional SP4 works to develop the adjacent West Basin by the end of June. The GSL Team never gave up, working closely with consultants WSP and Council to find innovative solutions to overcome the worst site conditions mother nature could throw at us. Practical Completion was issued by Council in November 2022, and even considering the programme delays, the Council was very happy with the result.

# "Flush Gordon" celebrates sewer network upgrade

PROJECT: Clyde Main Wastewater Pump Station

CONTRACTOR: HEB Construction

CLIENT: Central Otago District Council (CODC)

VALUE: \$3.7m

**The Clyde Main Wastewater Pump Station project helped CODC move the town from septic tanks to a sewer network, accommodating local population growth and making a significant difference to the community and the surrounding environment.**

HEB was the main contractor on the project, which commenced in December 2021 and was completed a year later in December 2022 to meet the Council's promise to the community to have the new system up and running in time for Christmas. Mayor Tim Cadogan was so excited to have the network online that he dressed up as "Flush Gordon" to celebrate.

This was a multi-disciplinary and highly technical project involving deep construction up to 8.5m, large lifts of three emergency storage tanks each sized at 26m long, 3m in diameter and weighing 8.4 tonnes, a complex Functional Description with automation parts, and challenging commissioning.

The job was a standout in terms of collaboration, with three other interlinked projects delivered by different contractors including the pressure main, the gravity main and intermediate pump stations, and the discharge pump station, as well as collaboration with the design consultant, Stantec, and multiple specialist subcontractors and suppliers.





# More than just financial benefits

PROJECT: **Ravensbourne Wharf Refurbishment**

CONTRACTOR: **HEB Construction**

CLIENT: **Port Otago**

VALUE: **\$4.8m**

**The Ravensbourne Wharf, in Otago Harbour, services sulphur-carrying cargo ships feeding Ravensdown's Ravensbourne fertiliser works.**

When the 90-plus year-old timber wharf started failing under the impact of the 100,000+ tonne cargo ships berthing alongside, the client, Port Otago, commissioned a design to strengthen and refurbish the wharf. HEB Construction was asked to review the design for constructability. HEB engineers deemed it overly complex, unworkable and unaffordable at more than \$8m. The Port then commissioned Beca to create a second design and HEB worked with the designer to confirm a simpler anchor pile, strut and fender beam structure

that would turn uplift pressure into compression when the big ships moored. The need for temporary works was removed and key items were pre-cast, significantly reducing risk and creating a \$4m saving on the original design, while at the same time increasing resilience.

Limited access and meticulous planning enabled the completion of the Ravensbourne Wharf Refurbishment by a six-person crew, from a barge platform, in just 20 weeks, ready for the Magpie SW to unload in March 2023. The fully compliant works were delivered without incident and \$100,000 under budget. Having the wharf operating removed 7,000 truck movements annually from the Port to the plant.

# Sustainable update on heritage Rail Bridge

PROJECT: Bridge 13 Hokitika Rail Beam Replacement

CONTRACTOR: Liddell Contracting

CLIENT: KiwiRail Holdings

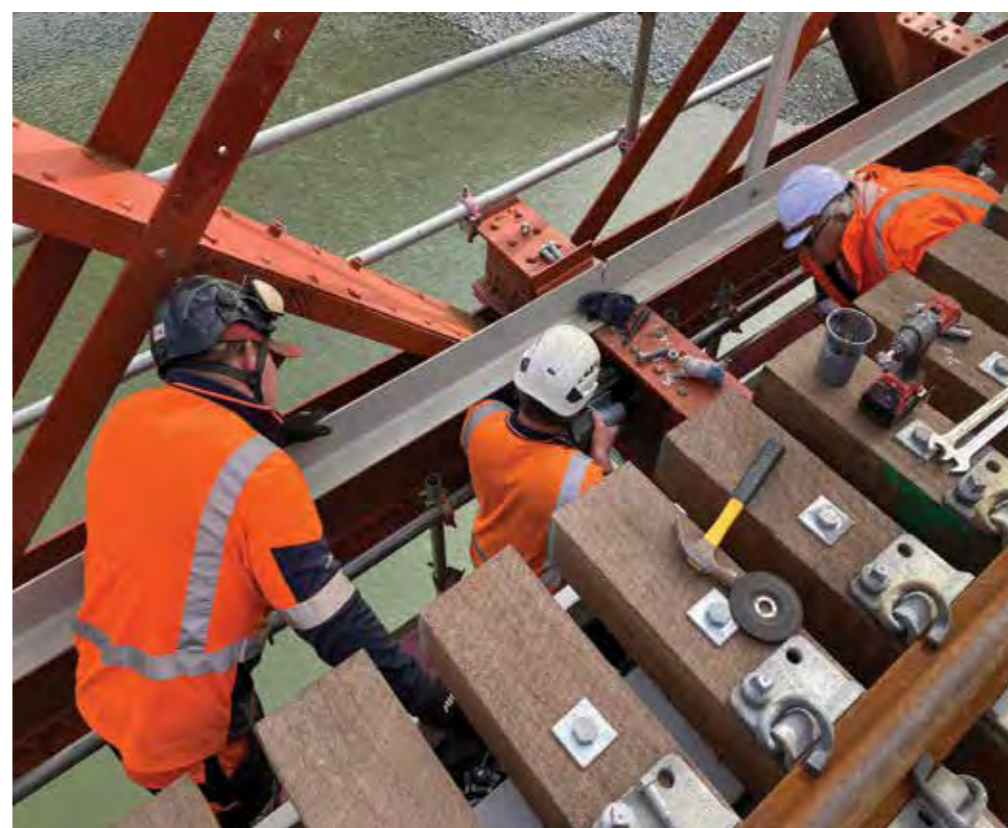
VALUE: \$2.3m

Contracted by KiwiRail Holdings, Liddell Contracting undertook the challenging rail beam replacement works to the 222m West Coast Taramakau River Rail Bridge (Bridge 13), with the work running from April to December 2022.

Challenges included the environment and heritage of the bridge (built circa 1900s). The old rivet-connected structure was built in imperial measurements, requiring on-site drilling of new base plates due to a lack of consistency of rivet holes. A time-sensitive six-week 'Block of Line' was required within the programme to align with the annual shutdown of the Hokitika Dairy Plant.

Key to success was rigorous coordination of complex activities

and innovation through Liddell's manufacturing of a purpose-built gantry crane that mitigated disruption to the riverbed, and exposure to river weir movements, providing a safe accessible environmentally-sustainable work site. Liddell had a 'one stop shop' service, with specialist works from design concept, through to all structural and electrical components of the crane, installation and project handover. This exemplifies innovative forward-thinking solutions. Environmental risks were mitigated, and a safe working environment resulted in recognition from KiwiRail of delivery quality in this challenging project, including robust systems and environmental performance.



# Pipe jacking enables motorway construction

PROJECT: 289 Northern Connection Culvert E530

CONTRACTOR: McConnell Dowell Constructors

CLIENT: Fletcher Acciona Joint Venture / Northern Express Group

VALUE: \$2.2m

**Fletcher Acciona joint venture (FAJV) awarded McConnell Dowell (MCD) the contract for the 289 Northern Connection Culvert E530 in May 2021.**

The project to replace an existing culvert, which enabled the widening of SH1 between Hudson Road and the Northern Connection, was part of the Ara Tūhono – Pūhoi to Warkworth (P2W) project. Work on the new 2.4m diameter 110m reinforced concrete pipeline began in October 2021.

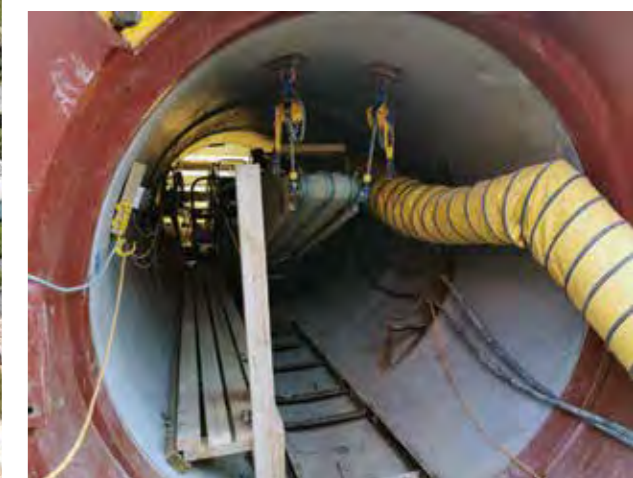
The new NX2 E530 culvert, 290m west of the SH1 and Hudson Road intersection, had a tight programme to deliver in six months so the P2W widening could begin.

Together the MCD project team, in house temporary works and mechanical teams, along with consultants Andy O’Sullivan and Bert Fourie, developed a novel semi-mechanised open face excavation system.

MCD pipe jacked 40m of the pipeline and subcontractor TDA open cut trenched 70m completing work in April 2022.

This is said to be the first time pipe jacking was used to tunnel under SH1, and it delivered to grade, on time and on budget – an outstanding achievement.

This is also said to be the first time a 2.4m diameter pipe jack using this method has been successfully implemented in New Zealand.



# Local contractor delivers results

PROJECT: Napier / Crosses Roundabout Construction

CONTRACTOR: Russell Roads

CLIENT: Hastings District Council

VALUE: \$2.4m

As a locally owned and whānau centred business, Russell Roads was thrilled to deliver this critical piece of infrastructure which aimed to improve traffic flows and road safety and accommodate increased demands associated with the growing population of Hastings and Havelock North.

An excellent working relationship with WSP as the Engineer helped in the successful delivery of the roundabout and

associated improvements for pedestrians and cyclists along this key arterial route.

The result has been highly praised by the local community and broader road users, and a step change was achieved in community engagement and stakeholder liaison while also developing the capability of a smaller contractor which specialises in asphalt paving.

The contract began in March 2022 and practical completion was achieved in November 2022.





# Long term benefits for the region, and staff

PROJECT: **Flaxmill Inundation Remediation Project**

CONTRACTOR: **Russell Roads**

CLIENT: **Central Hawkes Bay District Council**

VALUE: **\$4m**

**Russell Roads was thrilled to see social procurement outcomes built into the requirements for CHBDC’s Flaxmill Inundation Remediation contract, and took on this contract with enthusiasm.**

The works ran along Porangahau Road as part of the Provincial Growth Fund (PGF) initiative. The project aimed to rectify flooding issues at Flaxmill, upgrade bridges along the route for heavy vehicle capacity and address retaining wall risks.

Russell Roads had a collaborative and cohesive relationship with Stantec as the engineer, resulting in the successful raising of the road, bringing increased resilience to the route and enhancing accessibility and connectivity for the communities.

In the words of the team, “We not only delivered on the technical scope of the project by achieving a finished solution that is now significantly less likely to flood; we achieved significant broader outcomes for the local community. We employed 11 new people, five of whom came from CHB and a number of these through return-to-work processes (such as the Mayor’s Taskforce for Jobs). We’re incredibly proud of this outcome and even prouder to see many of this team working across our other projects long after Flaxmill was completed.”

Works began on Separable Portion 1 in March 2021 with final completion of all Separable Portions in August 2022.

# Local connections and a good track record

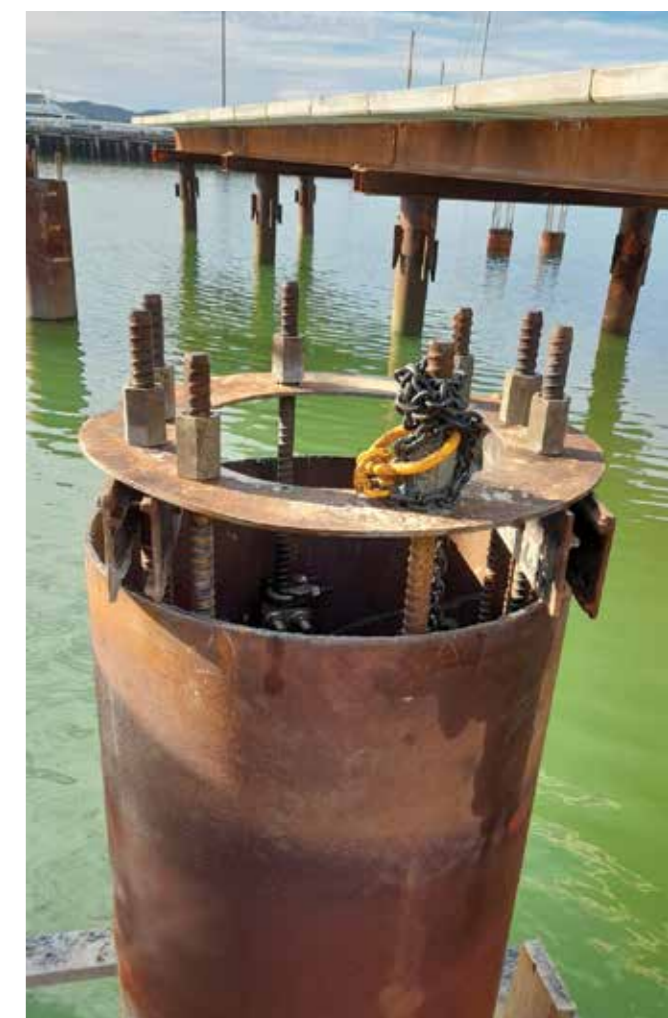


**PROJECT: 560T Travel-Lift Runway Construction**  
**CONTRACTOR: Steve Bowling Contracting**  
**CLIENT: Northern Travel – lift**  
**VALUE: \$2.7m**

**GHK Piling – a division of Steve Bowling Contracting, was awarded the Construction of a 560 tonne Travel-Lift Runway for Oceania Marine at Port Whangarei.**

Working closely with Shorewise Engineering Consultants and Bamford Consulting throughout the project to develop effective temporary works methodologies and alternative designs in a collaborative manner, the contract ran from June 2021 to October 2022.

“This was one of our most technically challenging projects we have completed, but still employing the same site and management team that completed a smaller travel lift for the client six years earlier meant we had a plan to effectively execute the works and the longstanding relationships with the client to make the project a success. The project was a real local project, with GHK Piling and the vast majority of our supply chain based within 3kms of the project site and we are very proud of the outcome for all parties involved.”







# Unfazed by focus on phases

PROJECT: **Waiwaka Terrace Stormwater Culvert**

CONTRACTOR: **Downer NZ**

CLIENT: **New Plymouth District Council**

VALUE: **\$4.1m**

**Beginning in June 2020, via Early Contractor Involvement (ECI), Downer New Zealand, as holder of the New Plymouth Infrastructure Partnership contract for the New Plymouth District Council (NPDC), undertook to repair and strengthen a large, damaged culvert running under a densely populated residential area of New Plymouth city.**

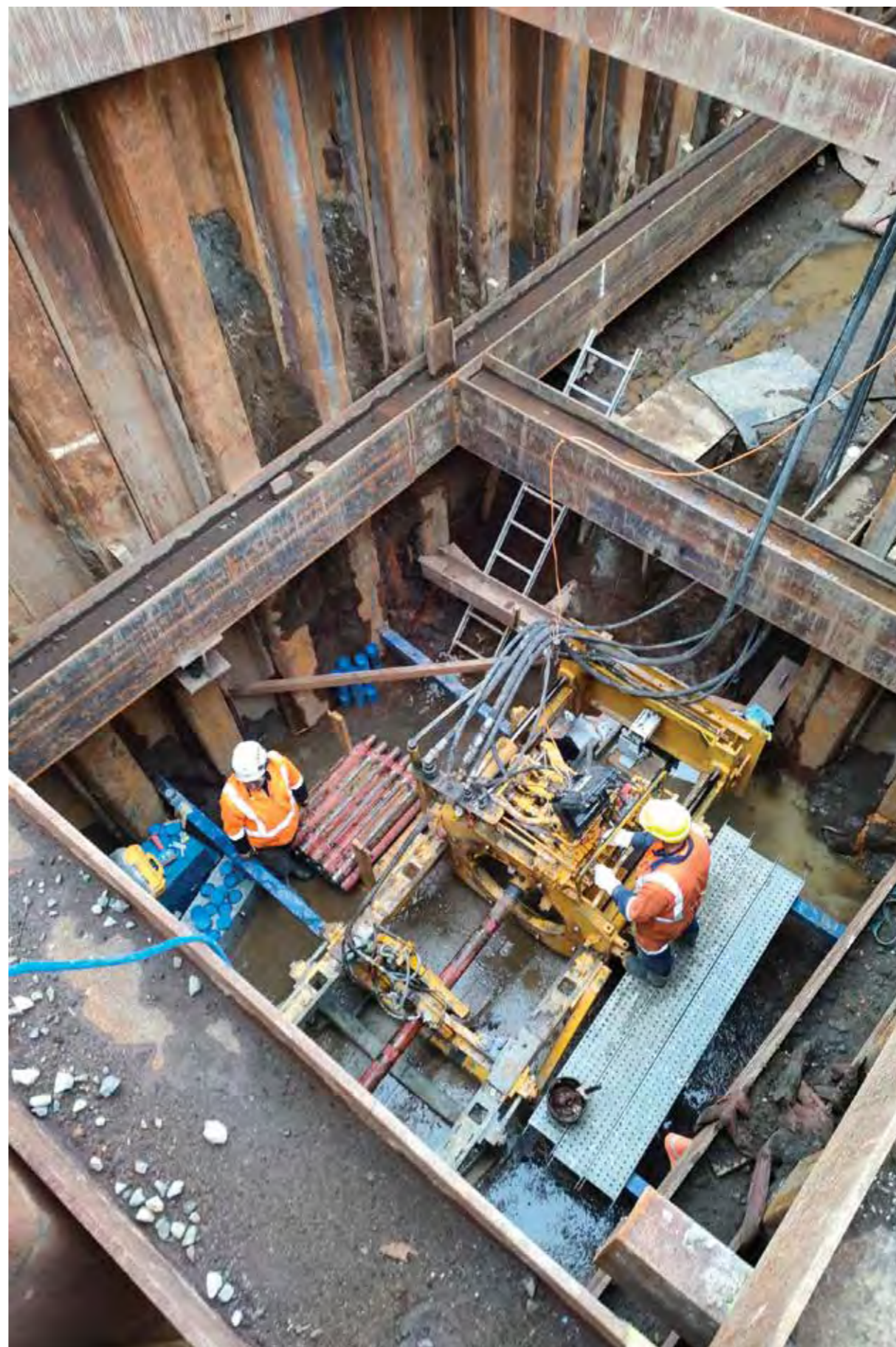
The works were considered highly complex as the operations required completion in a manner that eliminated, isolated and minimised health and safety risks to workers; adjacent property owners; the public; and other stakeholders.

During ECI and design, it was decided to deliver the project in two phases. Phase 1 focussed on access, strengthening the

undamaged infrastructure and temporary 24/7 critical sewer and stormwater functionality. Phase 2 focussed on repairs and installation of the new boxed culvert, sewer line, tunnel access and relining existing pipeline. Phase 3 was later added by NPDC, and focussed on replacement of further pipeline and an additional stormwater line.

All completed phases met contract specific KPIs, delivered on collaboration, innovation, people development and critically were concentrated on affected stakeholders and minimising disruption to (but bettering) their daily lives.

The fact the project was delivered on time, to budget and with zero LTIs is a testament to the strong contractor-consultant-client relationship and leadership across the entire project.





# Sideways thinking successful

PROJECT: **Porirua Wastewater Treatment Plant: Hydraulic Upgrade and Milliscreen Channel Remediation**

CONTRACTOR: **Brian Perry Civil**

CLIENT: **Wellington Water**

VALUE: **\$6m**

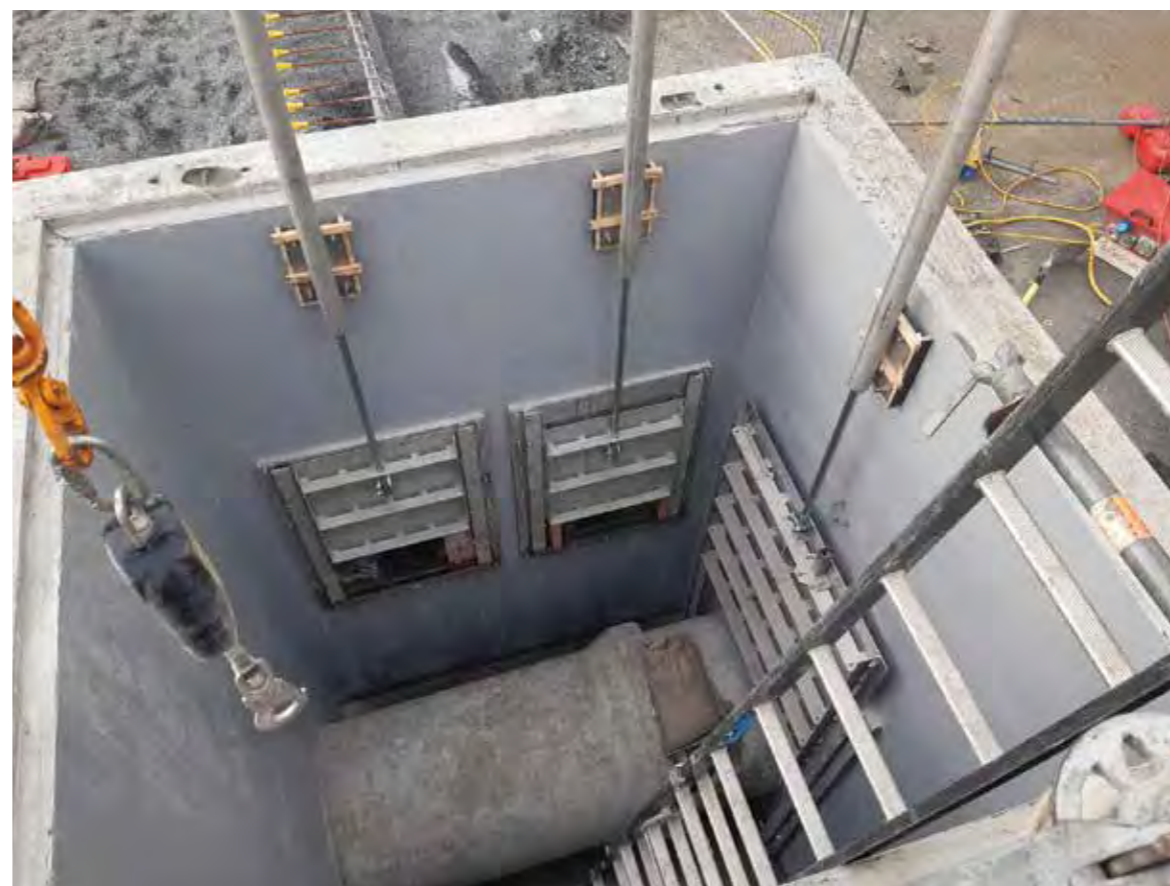
**When contacted by Stantec in January 2021 to help develop a solution for the Porirua Wastewater Treatment Plant, the team at Brian Perry Civil (BPC) knew they could help.**

BPC was engaged through early contractor involvement for client Wellington Water through its CAPEX panel. The team reviewed the permanent works design concepts and flagged the potential requirement for expensive and extensive temporary overpumping. BPC proposed a novel idea and a different approach to the temporary works required: by establishing a bypass of the treatment plant inlet works, supported by semi-permanent step screen, a viable solution was developed. This solution

generated a 16 percent cost saving, a significant achievement for Wellington Water, Porirua City Council and their stakeholders.

Works started onsite in November 2021. The project was delivered efficiently and the team adapted to meet design changes and the requirements of working in an operational treatment plant. Working collaboratively with plant operators Veolia, the BPC team maintained open communication while also assisting with small repairs around the plant. Works were completed in April 2023.

Since the bypass stepscreen was installed there have been no untreated discharges into Titahi Bay as the bypass system was sized to the new hydraulic flow requirement.



# Fast-paced and fantastic

PROJECT: **Helensville Wastewater Treatment Plant Upgrade**

CONTRACTOR: **Brian Perry Civil**

CLIENT: **Watercare Services**

VALUE: **\$8.4m**

**Brian Perry Civil (BPC) combined pace, digital smarts, and deft collaboration alongside the client, Watercare Services, equipment supplier, Veolia, and lead designer, Beca, to deliver a critical piece of wastewater infrastructure that will see Watercare continue to meet the growing environmental and sanitation needs of Auckland's northwest.**

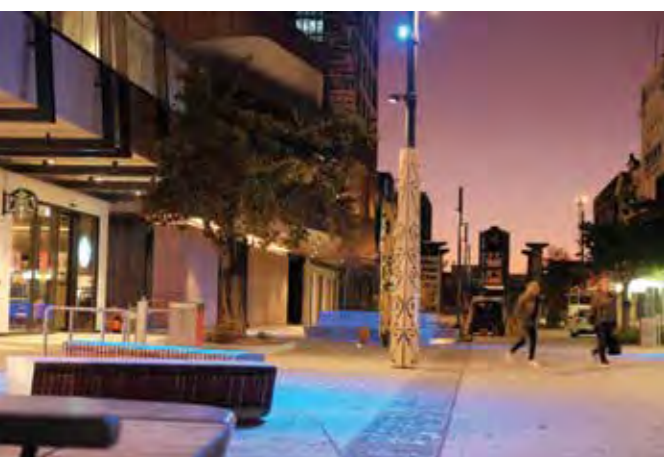
In November 2021, Watercare instigated the fast-tracked Helensville Wastewater Treatment Plant Upgrade to re-optimize the treatment performance of the plant. In less than a month, there was a committed programme to procure, design, consent, and construct the project within a year, with an additional three months to commission. A bold commitment! A year later, with all major equipment installed, the commissioning

team successfully brought the upgraded facility online.

Main construction activity took place on an earth dam with significant restrictive loading limits, dictating construction and installation methodology. This included ground stabilisation, structural works, pavements, drainage, monitoring and evaluation, and commissioning – all while the existing plant remained operational.

The construction team demonstrated exceptional performance across health, safety, and well-being; environmental; technical; budget; and programme – matching the talented team contributions from Watercare, Veolia, Beca, and wider project partners. The project was delivered in a high-risk environment on time, under budget, and to a high degree of client satisfaction.





# Bringing back the character

PROJECT: Invercargill Streetscapes – Stage 1

CONTRACTOR: Downer NZ

CLIENT: Invercargill City Council

VALUE: \$18.4m

**Don and Esk Streets have always been the heart of central Invercargill, but you might not recognise them if you haven't visited Invercargill for some time.**

Stage One of Invercargill City Council's City Streets Upgrade (delivered by Downer) has transformed these two central city streets into vibrant, enticing public spaces which encourage people to visit, shop, and stay for longer.

Procured under an ECI framework, the project team comprised Invercargill City Council, TBIG, Isthmus, Bonisch, and WT Partnerships – with Downer selected to provide constructability input from May 2021 and then manage physical delivery from August 2021. The new streetscapes

were formally opened on 14 April 2023, when Waihōpai rūnaka led a whakawātea blessing for City leaders, council staff, contractors, retailers and community investors. Keeping retailers 'open for business' throughout the works was vital – especially in the wake of Covid-19 Alert Level 4 and 3 lockdowns. Led on-site by Downer's supervisor 'Chopper', the team spent time getting to know individual retailers and keeping them informed as works progressed outside their businesses. Adding to this project's complexity was that vertical construction works were occurring alongside the sites for the Invercargill Central Mall development, Langlands Hotel construction and the HWR Tower.

# Lateral thinking – literal success

PROJECT: 48-day State Highway 6 Remediation Project

CONTRACTOR: Fulton Hogan

CLIENT: Waka Kotahi NZ Transport Agency

VALUE: \$13m



The completion of the SH6 Reinstatement Project in just 48 days demonstrates how thinking laterally about constructing and repairing roads after natural disasters makes it possible to achieve new levels of flexibility, speed, efficiency, environmental benefit, public utility and asset quality.

In a changing climate, the SH6 Reinstatement Project helps answer some important questions. Like how to minimise the overall public and commercial inconvenience of major repair projects by minimising their duration. Like how to turn the need for reinstatement into an opportunity to address historical realities – in this case a state highway built on the path of a former stagecoach route. It also points to how projects can be more holistic in involving and integrating social, community and emergency services and in addressing the causes of the damage through careful hydrological analysis, drainage, structures, overland flow and erosion protection.

To quote Fulton Hogan’s SH6 Reinstatement Project Manager, Matt Loach: “There’s really nothing more focusing than an absolute deadline, a critical need and the opportunity to come up with creative ways of meeting that deadline and need. The SH6 reinstatement project is essentially a story of a wide and diverse team’s clarity of thought, quality of communication and singularity of action.





# Ground-breaking technology

**PROJECT: QLDC Recreation Ground Pump Station and Rising Main**

**CONTRACTOR: HEB Construction**

**CLIENT: Queenstown Lakes District Council**

**VALUE: \$13m**

**In April 2020, HEB Construction commenced works on the Recreation Ground Pump Station and Rising Main project for Queenstown Lakes District Council.**

Consisting of complex resilience upgrades to Queenstown’s struggling wastewater network, HEB embraced the opportunity to find innovative ways to deliver this high-profile project, within the heart of NZ’s luxury tourism capital, in the least disruptive way possible. Collaborating with QLDC and Beca, HEB proposed a trenchless solution via Horizontal Directional Drilling (HDD).

On day one of this ground-breaking project, NZ was placed into an unprecedented Covid-19 lockdown. As a result, this project became one of the first instances of remote steering an HDD rig in NZ by an offshore specialised HDD pilot operator via Wi-fi.

The first of many challenges faced and overcome, this project stands out as a shining example of what can be achieved when project partners collaborate, innovate, apply optioneering, meticulously plan, and continuously adapt to changing circumstances.

Highlights include performing the largest tank lift in NZ to install two tanks almost 60m each in length; innovating to overcome unforeseen challenges and high-risk activities; achieving timely completion; and establishing excellent working relationships with the client and project partners along the way.





# Superlative PACE of change

PROJECT: **Lincoln Road Roading and Watermain Renewal Stage 1 (Barrington Street – Moorhouse Avenue)**

CONTRACTOR: **Isaac Construction**

CLIENT: **Christchurch City Council**

VALUE: **\$7.6m**

**Christchurch City Council awarded Isaac Construction a logistically challenging project to install a bus lane, update utilities infrastructure and provide a solution to reduce speed on a busy high profile arterial road stretching 1.5km into Christchurch City.**

Strong project management and stakeholder management successfully mitigated risks.

Economic and social considerations were required for 300+ local businesses, community and several major sporting and event facilities with high foot and vehicle traffic that exceeded 20,000 vehicles on a non-event day. Being able to pivot the programme after consultation with all stakeholders ensured commercial viability and community satisfaction whilst also

ensuring health and safety, environmental protection and complex traffic management was not compromised.

One of the project innovations was a strategy to have a high-impact, low-duration approach to the busy intersection of Lincoln, Barrington and Whiteleigh Streets. After considerable consultation with all stakeholders including businesses and residents, works were scheduled and completed over a 72-hour period. Without this methodology, resurfacing works would have taken four weeks to complete.

This \$7.6m project that ran from May to November 2022 was completed four weeks early during the winter months and received a 90 percent PACE score, described as “Superlative” by Christchurch City Council upon completion.



# Vintage work a group effort

PROJECT: **Birch Hill Vineyard and Dam Development**

CONTRACTOR: **Simcox Construction – part of the Isaac Group**

CLIENT: **Delegat**

VALUE: **\$17.5m**

**Delegat awarded Isaac Group the contract to develop Delegat’s extensive Birch Hill Vineyard and Dam, the largest lined dam in the Marlborough region at 12.7ha with the complexity of 13m high walls, requiring 330,000m<sup>3</sup> of solid cut to fill with bulk earthworks. This was a mixture of cost reimbursable and tendered measure and value contract.**

Through ECI involvement, \$6.3m was saved in gravel; significant carbon savings were realised; a complex and significantly-sized project was delivered to the desired timeframes; and lastly, a lasting relationship with the client

developed, which has resulted in further works. The scope included clearing and contouring of the site, drainage, pipe ramming under SH63 and 50 percent of the roading design.

All three businesses within the Isaac Group, Isaac Construction, Simcox Construction and Liddell Contracting played a part in this success. The project took four months to complete. Teams' had up to 30 staff on the dam at the peak of bulk earthworks, averaging 7100m<sup>3</sup> of cut to fill a day – demonstrating our team’s commitment to delivering the project to schedule and within the required timeframes.







## Culturally significant and World class

PROJECT: Pā Reo

CONTRACTOR: Pritchard Civil

CLIENT: Te Wānanga o Raukawa

VALUE: \$5m

**Starting in November 2021 and completed by May 2023, Pā Reo is the latest stage of campus upgrades at Te Wānanga o Raukawa in Ōtaki. Pā Reo is an integral part of the master plan for the campus, comprising four new teaching and administration buildings, carparks for over 100 vehicles and the creation of a central landscaped spine that serves to connect the campus and natural features within this tikanga Māori learning environment.**

Pā Reo has been designed and built as a Living Building Challenge, which is a rigorous certification programme considered to be the highest standard of sustainability in the world. Once certified, Pā Reo will be one of only 30 Living Building projects around the world.

Ōtaki's Pritchard Civil and its subcontractors completed the civil construction components of the project. From a construction point of view the Living Building Challenge challenged the team to rethink the way it has traditionally gone about business. In time many of these building philosophies, practices and materials

may become industry norm.

The team counts itself fortunate to have worked with a fantastic team including the client Te Wānanga o Raukawa, architect Tennent Brown, project engineer Land Matters, builder McMillan Lockwood and excellent subcontractors, in particular Koastal Kerb, Kapiti Landscapes and Daniel Renshaw. The Pritchard Civil team is proud to call Ōtaki its home and be part of this culturally significant and world class sustainable development.



# A collaborative approach

PROJECT: **Darfield to Pines Waste Water Pipeline**

CONTRACTOR: **CORDE**

CLIENT: **Selwyn District Council**

VALUE: **\$21m**

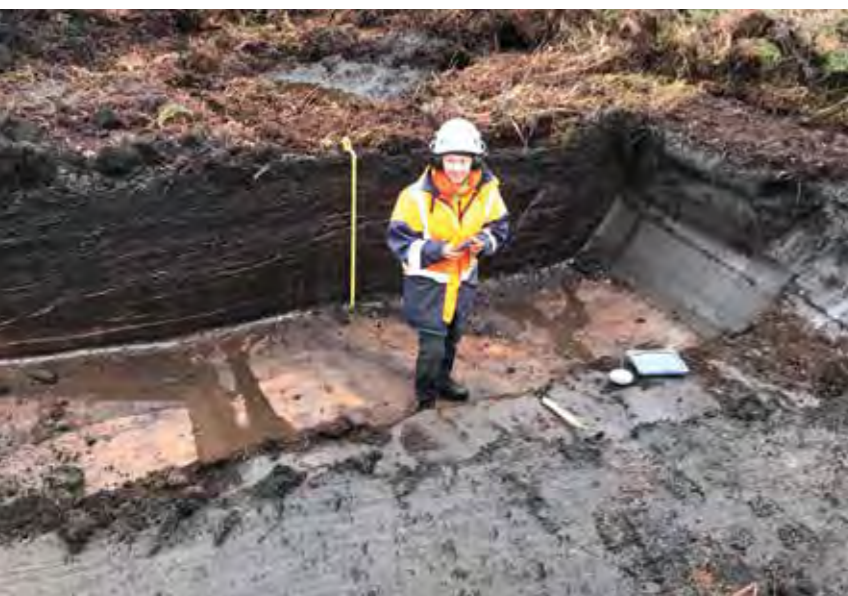
**Introducing the groundbreaking Darfield to Pines Wastewater Pipeline project—a testament to quality and innovation. This transformative endeavour, delivered by CORDE for Selwyn District Council, and with the support of Beca, achieved completion on time, despite the challenges posed by the COVID-19 pandemic.**

As the largest community in New Zealand without a reticulated wastewater system, Darfield and Kirwee finally received the much-needed infrastructure they deserved. This ambitious project not only addressed immediate community needs but also paved the way for future growth, greatly improving public health and environmental sustainability. The

pipeline spanning 27km comprised a unique design while the installation of pump stations and modifications at the existing wastewater treatment plant added technical complexity. The risks and opportunities faced by CORDE during this monumental project pushed them to embrace a new way of thinking, particularly in terms of health and safety and team culture.

With an unwavering commitment to reducing waste and ensuring the well-being of their team, CORDE's project sets a new standard for excellence in the industry. This remarkable achievement not only revolutionises wastewater management, but also demonstrates the power of collaboration and forward-thinking solutions.





# Longer and stronger

PROJECT: **Chatham Islands Airport**  
 – Inia William Tuuta Memorial Airport, Upgrade ECI

CONTRACTOR: **Downer NZ**

CLIENT: **Chatham Islands Airport (CIAL)**

VALUE: **\$42m**

**Upgrade for the Chatham Islands Airport Limited (CIAL) was a Crown Infrastructure Partners funded Shovel Ready Project. Delivered under a collaborative ECI model, Downer, as Head Contractor, worked closely with Client CIAL and Engineering Consultant Beca during an eight-month ECI phase which commenced in March 2021.**

Physical works began in September of the same year. The project involved lengthening and strengthening the existing runway, taxiway, and apron at Chatham Island's Inia William Tuuta Memorial Airport to accommodate modern jet aircraft and improve services to this remote populated region. Completing the project presented an opportunity for a step-change in

the Islands' economic growth and its 600-strong community's social well-being.

This major infrastructure project overcame many challenges, including the COVID-19 pandemic, extreme weather conditions, difficult ground conditions on an environmentally sensitive site, and working in an operational airport located on the most isolated site in New Zealand. The Islands lie 840km east of Christchurch, so careful logistics management was integral to successful project delivery. It was delivered to high client satisfaction, with exceptional HSQE results and within budget. Practical Completion was achieved three months ahead of the agreed programme on 9 March 2023.

# Ensuring BOP won't go thirsty

**PROJECT:** Waiari Water Treatment Plant  
**CONTRACTOR:** Fulton Hogan  
**CLIENT:** Tauranga City Council  
**VALUE:** \$49.6m

**Fulton Hogan was contracted for the construction of the Waiari Water Treatment Plant and facilities for the Tauranga City Council.**

This state-of-the-art plant in Te Puke is a once-in-a-generation asset. It was designed by Beca and has been 16 years in the making to provide for growth within Tauranga City, particularly the Mount Maunganui and Papamoa areas. Construction of the microfiltration membrane-based plant with a design capacity of 60ML/d commenced in August 2020 and was completed in December 2022.

The project was a multi-disciplinary build which included structural, civil, mechanical, electrical, and architectural aspects. The wider community also got involved through a planting day, allowing the public a closer look at the project while planting plants together with their families.



# Wellington Reservoir is out of sight

PROJECT: **Omāroro Reservoir**

CONTRACTOR: **HEB Construction**

CLIENT: **Wellington Water**

VALUE: **\$47m**

**A total of \$9m in savings, on-time delivery and a 48 percent reduction in emissions were key successes for HEB Construction in the design and construction of the 35 million litre Omāroro Reservoir in Mt. Cook Wellington, for Wellington Water.**

An alternative design reduced carbon emissions by 2363.53t CO<sub>2</sub>e through reduced excavation, the concrete and steel required for reinforcing, and truck movements required.

From the contract being awarded in June 2020, the reservoir was commissioned in December 2022 on this relationship-driven, ECI contract combining partnerships of HEB Construction and Holmes Consulting working closely with Wellington Water

and their design consultants Beca.

Collaborative value engineering at every step revolutionised the initial approach into a structure capable of withstanding a 1:5000-year earthquake and doubling Wellington's water storage (enough water to fill 14 Olympic-sized swimming pools) with a more resilient supply.

The reservoir was built on a steep, constrained site in the heart of residential Mt Cook, above the popular Prince of Wales Park and within the city's environmentally sensitive Town Belt. Neighbours and community groups participated, through genuine 'making a difference' engagement.

In time, the now fully buried reservoir, will blend into the landscape that Wellingtonians love so much. Vital infrastructure, hidden from view.



# Auckland Airport growth on track

PROJECT: **AIAL Terminal Integration Plan – WP6 – East Airfield Building Relocation**

CONTRACTOR: **McConnell Dowell Constructors**

CLIENT: **Auckland International Airport**

VALUE: **\$29m**

**McConnell Dowell (MCD) and its building brand Built Environs (BE) delivered the \$29m East Airfield Building Relocation Project for Auckland International Airport in 2023.**

The project was awarded in February 2022 and construction started in March. The scope of works involved the construction of a new airside facility including:

- four new buildings;
- a transitional waste facility;
- an effluent waste facility;
- a 'Check point Charlie' (a security building which will manage security and access between the landside and airside areas); and
- the relocation of one building for the Ministry for Primary Industries and the

construction of a new stockyard. Located within the Auckland International Airport, the project was highly challenging due to its high-risk environment and interactions with multiple stakeholders. This project was part of the airport's 30-year Terminal Development Plan, and any delays would have had a direct impact.

The strong focus on communications, strict safety systems and detailed logistical planning allowed MCD and BE to successfully deliver this project, while making sure there was no disruption to the critical airport daily operations and customers. MCD and BE delivered the works on programme and achieved outstanding safety records with 0 LTI, 0 MTI with 115,000 manhours.





## Historic new bridge arises

PROJECT: **Ngā Hau Māngere – Old Māngere Bridge Replacement**

CONTRACTOR: **McConnell Dowell Constructors**

CLIENT: **Waka Kotahi NZ Transport Agency**

VALUE: **\$46m**

**McConnell Dowell was awarded the \$46m Ngā Hau Māngere / Old Māngere Bridge Replacement project by Waka Kotahi on 19 August 2019. The deconstruction of the 105-year-old Māngere Bridge and construction of a new bridge started just one month later.**

The new bridge was designed by Aurecon to reconnect Onehunga and the suburb of Māngere Bridge and was completed on time, Lost Time Injury free and with an excellent environmental record in three years: on 19 August 2022.

It was a challenging project, located over a sensitive marine environment and underneath high voltage powerlines.

The design of the new bridge was very technical requiring the construction of complex concrete structures such as the V-shaped piers in the middle of the harbour. About 414 tonnes of steel deck and arch also needed to be craned into place below high-tension powerlines.

A variety of complex temporary works schemes provided solutions to the construction challenges, with a high degree of interaction between the temporary and permanent works. Work was carried out on several fronts at the same time to reduce the programme. This included the deconstruction of the old bridge, and construction of the new one which was carried out from the north and south simultaneously.



# Community connections

PROJECT: **Glen Innes to Tamaki Drive Sections 2 and 3**

CONTRACTOR: **Oxcon CLL**

CLIENT: **Waka Kotahi**

VALUE: **\$32m**

Oxcon CLL was awarded Section 2 of the Glen Innes to Tāmaki Drive Shared Pathway by Waka Kotahi in 2019. This project consisted of the construction of 2.6km of new shared path between St Johns Road and Ōrākei Basin in Meadowbank, Auckland. It included constructing 900m of elevated boardwalks through a Significant Ecological Area (SEA) and adjacent to the tidal Pourewa Creek, a coastal marine area (CMA).

It also featured two large supertee concrete bridges – Bridge B2 at 100m long and Bridge B6 at 190m long crossing over the North Island Main Trunk rail line, plus approximately 1.4km of at-grade concrete path.

The works also included designing and constructing a new balustrade for 700m of elevated marine shared pathway boardwalk forming Section 3 of the Glen Innes to Tāmaki Drive path. This required

working over and in water at the Ōrākei Basin.

The main project consultants were Road Lab, Eliga and Stantec. The project commenced in April 2019 and was completed in March 2022 and opened to the public in May 2022, creating a unique and special asset which connects the local communities.





# Transformational expressway

PROJECT: **Hamilton Section of the Waikato Expressway**  
 CONTRACTOR: **City Edge Alliance**  
 CLIENT: **Waka Kotahi NZ Transport Agency**  
 VALUE: **\$837m**

**This is a story of teamwork, resilience and a dogged determination to deliver a quality expressway – no matter what roadblocks the climate or Covid put in the way.**

The City Edge Alliance was formed in October 2015 to design and build the Hamilton Section of the Waikato Expressway project – the final 22km of the Waikato Expressway around Hamilton city – a safe four-lane expressway featuring 17 bridges. The alliance contract required staff from six organisations— Fletcher, Beca, Higgins, Coffey, Hick Bros and the client Waka Kotahi NZ Transport Agency – to work as a team to deliver the

Waikato Region’s largest-ever roading project. More than 7500 people were part of that team.

That Alliance team would need to address a range of complex conditions, adjust their approach and the programme, to deliver a high-quality expressway.

The Hamilton section opened in July 2022, and has transformed the way people and goods move around the city. Congestion has since eased, journey times were slashed and growth opportunities are now being realised. Waka Kotahi – and road users – can look forward to a new level of performance from the Alliance’s Hi-Lab road pavement.

# Nationally significant road completed

PROJECT: **Peka Peka to Ōtaki Expressway (PP2O)**

CONTRACTOR: **Fletcher Construction Company**

CLIENT: **Waka Kotahi NZ Transport Agency**

VALUE: **\$395m**

**The Peka Peka to Ōtaki (PP2O) Expressway runs between Peka Peka to just north of Ōtaki in the Wellington Region. It is part of the Roads of National Significance programme, running north from the previously completed Mackays to Peka Peka (M2PP) Expressway.**

The project, which began in February 2017 and completed in December 2022, consisted of the design and construction of 12.2km of four-lane expressway, 9km of associated local (Kāpiti Coast District Council) road construction and the realignment of 1.4km of the KiwiRail North Island Main Trunk and associated yards at the Ōtaki station.

Notable assets constructed include 12.2km of structural asphalt pavement, 10 bridging structures – including two

partial grade separated interchanges (north and south of Ōtaki) and a 330m-bridge across the Ōtaki River – as well as significant stormwater detention and treatment structures, 10km of shared user path and two gateway feature structures.

Fletcher Construction (comprising Fletcher Major Projects and Higgins) engaged Beca as the lead designer, with Tonkin + Taylor responsible for geotechnical and stormwater design. Client advisors were Axell Consultants and WSP.

Goodman Contractors was subcontracted and completed just over 2m cubic metres of bulk earthworks.

Works delivery was also supported by Fletcher Building supply chain partners Winstone Aggregates, Firth Concrete and Fletcher Reinforcing.





# SH1 and SH18 improving connections

PROJECT: **Northern Corridor Improvements**

CONTRACTOR: **Northern Corridor Improvements Alliance**

CLIENT: **Waka Kotahi NZ Transport Agency**

VALUE: **\$730m**

**Starting in July 2017, the Northern Corridor Improvements (NCI) Alliance – Waka Kotahi, Fulton Hogan, HEB Construction, WSP and Jacobs – completed 4.6m work hours for delivery of a hugely demanding and complex brownfield project located in Albany, Auckland.**

The project has improved motorway connections between SH1 and SH18 to open up the Western Ring Route, extended the Northern Busway to Albany and built walking and cycling paths to improve community connections and transport options.

In the process, the Alliance absorbed an additional \$253m of project scope and worked across up to 50 distinct fronts simultaneously.

The result will provide benefits for

decades to come. Its reach, ambition and success make the Northern Corridor Improvements a blueprint for how to envisage, plan and execute a complex multi-disciplinary project of the future – successfully designing and building contemporaneously from the start, achieved within time and budget.

Multiple aspects this project are likely to inform and enhance the design and execution of similar future projects, including how to minimise impacts on the public; accommodate major increases in scope midcourse; incorporate public amenities into a broader transport function; maximise integrated decision-making with utilities providers; and how to maximise the community's contribution to the outcome and to building for a future that is not all about the car.



# City-wide safety first on Auckland's roads

PROJECT: Physical Works Panel – Safety

CONTRACTOR: Fulton Hogan

CLIENT: Auckland Transport (AT)

VALUE: \$152m

**The Auckland Transport Safety Panel is a first for civil construction in Auckland; a major step forward for safety in New Zealand's biggest city; unlike any other contract before it.**

Set up in July 2021 to improve road safety, AT and Fulton Hogan together entered this major project making significant positive changes to 455 high-risk intersections and 1700km of high-risk routes across the Auckland network.

153 contracts valued at over \$152 million awarded under this city-wide panel have:

- Saved the lives of the public by building smart roading infrastructure;
- Reduced typical project lifecycles by 14 weeks;

- Reduced time spent on procurement and administration by 38,000+ hours for panellists and AT;
- Driven a more collaborative working culture;
- Provided opportunities for input from communities to develop and implement temporary traffic management;
- Improved design quality and addressed construction risks earlier through enabling early engagement with contractors;
- Removed procurement from the project critical path;
- Enabled AT to receive consistent unit rates – putting greater focus on delivery and quality while providing a forward workload view to contractors; and
- Significantly helped AT to successfully deliver its Safety portfolio.





2023 HIREPOOL  
CONSTRUCTION  
EXCELLENCE AWARDS  
WINNER CIVIL CONTRACTORS NZ

# Winning wharf delivered 7 months early

PROJECT: **Te Whiti 6 Wharf Construction**

CONTRACTOR: **HEB Construction**

CLIENT: **Napier Port**

VALUE: **\$149m**

**Napier Port needed to accommodate the dramatic increase in cargo and cruise ships to serve the Hawke's Bay and beyond.**

In January 2019 the Port engaged HEB Construction, under early contractor involvement, to work with Beca to confirm a design and accurate estimate so they could launch an Initial Public Offer to fund the building of a new wharf. Once finalised, funding was secured and the \$149m 390m long by 34m wide 6 Wharf construction began in January 2020 on a site with high winds, 200 little blue penguins in residence, and within an operating port. The penguins were rehomed, and the wharf was completed in

June 2022, seven months early and under budget, without incident.

Unique to New Zealand methodologies included a rotating grappling hook with parts from four countries, placing 50,000t of rock and 4,500 customised concrete blocks up to 18t each. HSEQ risks were minimised, however didn't cover the unexpected piercing of an unknown natural gas seam during pile driving requiring an urgent methodology redesign to keep everyone safe. Rich relationships were developed with iwi to protect cultural and ecological values, and community ownership was achieved through involvement and celebration of the success of this legacy project.



# High diversity on the West Urban Road corridor

PROJECT: **Auckland Transport West Urban Road Maintenance Contract**

CONTRACTOR: **Fulton Hogan**

CLIENT: **Auckland Transport**

VALUE: **\$40m**

**Fulton Hogan has delivered outstanding results for AT from July 2003 to August 2022 in delivering the \$40m+ per annum West Urban Road Corridor Maintenance Contract.**

Covering one of the largest single urban road corridor contract areas in Tāmaki Makaurau, this outcomes-based contract incorporated a highly diverse geographical area: a wide network of sealed and unsealed roads and assets across urban suburbs, rural areas, and the commercial business districts of

New Lynn, Westgate, Avondale, and Henderson.

Working closely and collaboratively with Auckland Transport across two decades in an established environment of trust, Fulton Hogan delivered consistent outcomes across the West Auckland network. And emergency response has been a key requirement of work on the network, as shown in Fulton Hogan's response at speed to the numerous storm and landslip events across the life of this contract – particularly since Auckland's wettest day on January 27 2023.





# Rural road recovery and response

PROJECT: **Hastings District Council Rural Road Maintenance Contract**

CONTRACTOR: **Fulton Hogan**

CLIENT: **Hastings District Council**

VALUE: **\$40m**

**The objective of Hastings District Council’s rural road maintenance contract is to provide its ratepayers and the travelling public with a safe and functional roading network, well maintained in a cost-effective manner. Fulton Hogan has helped the Council achieve this for 14 years.**

As the end of a one-year contract extension neared, the costliest tropical cyclone on record for the Southern Hemisphere hit. Peaking at a Category 3 severe cyclone, the Hawke’s Bay region was devastated. In response, Fulton Hogan did all it could to get roads open and people to safety.

The storm wreaked havoc on the

region’s road network, resulting in 120 closures, numerous slips, flooding, and the failure of 16 bridges. Repair costs are estimated to exceed \$2b in the Hastings District alone. Fulton Hogan immediately set to work on a detailed and methodical recovery phase.

Unable to address the scale of the damage alone, Fulton Hogan has partnered with subcontractors from across the region to deploy 90 recovery crews – totalling 400-500 people across the network. Since February, these crews have delivered an outstanding (and still ongoing) response, going beyond the call of duty to reconnect some of the hardest hit communities.

# Achieved through collaboration

PROJECT: Coastal Otago Network Outcomes Contract (CO NOC)

CONTRACTOR: Downer NZ

CLIENT: Waka Kotahi NZ Transport Agency

VALUE: \$86.5m

For Waka Kotahi NZ Transport Agency's Coastal Otago Network Outcomes Contract, Downer carries out routine maintenance and operation of the 773km state highway network, the largest in the country.

Working as part of the 'Highway Highlanders', Downer has had a crucial role in making this a top-performing NOC.

Outstanding performance has been achieved from a truly collaborative relationship between all parties including Waka Kotahi, Stantec and subcontractors SouthRoads and McDonoughs. High performance is reflected across all key performance areas with the exceptionally high scores being seen in safety, customer satisfaction, sustainability, and network performance.

The contract is now defined by best practice asset management where Downer and the other Highway Highlanders have moved from implementing processes and systems to collect accurate data and implement whole of life solutions to a space where they are achieving aspirational goals.





# Trust, technology and relationships

PROJECT: **Tasman Alliance**

CONTRACTOR: **Downer NZ**

CLIENT: **Tasman District Council (TDC)**

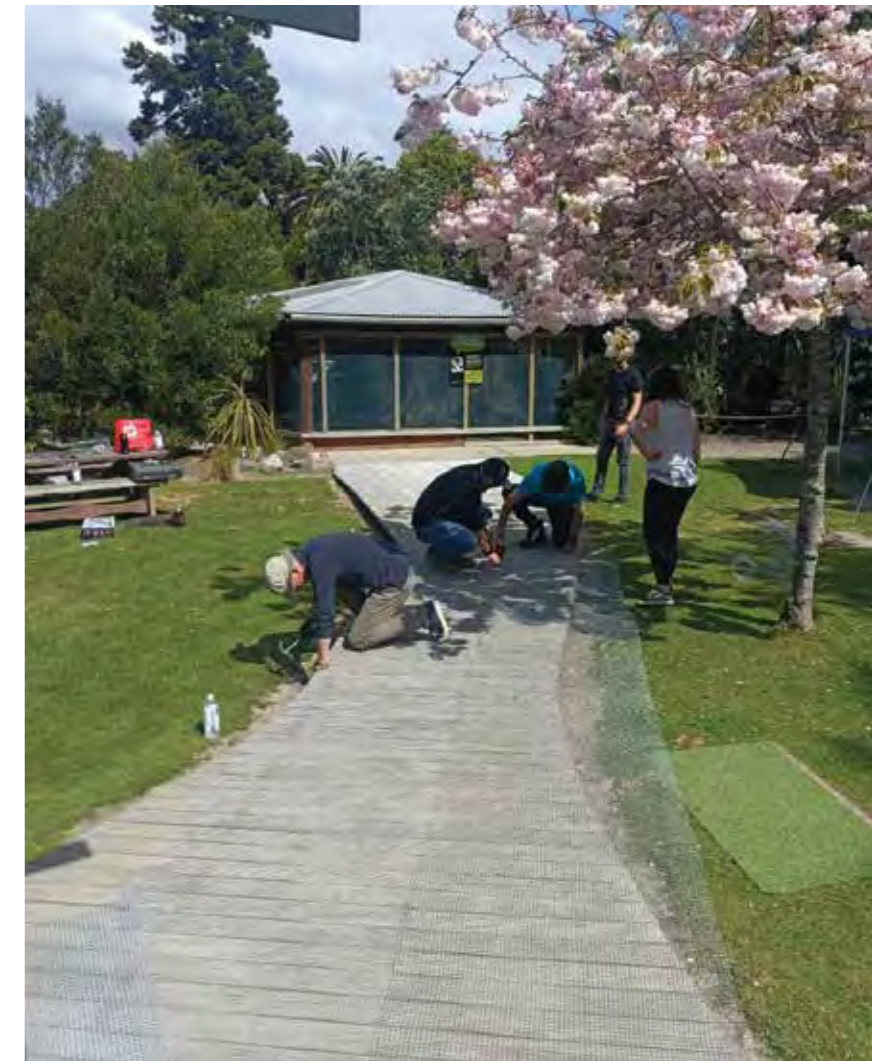
VALUE: **\$19.5m**

**Tasman Alliance is a highly collaborative relationship between Tasman District Council and Downer, comprising an integrated team of council staff, contractors, and supply partners working together to improve asset management and renewal and maintenance services to the Tasman District.**

Based out of Richmond, trust developed and relationships built with elected officials and key stakeholder groups has improved understanding of what's important on the network. Successful outcomes include a marked improvement in the quality of asset data captured, managed, and analysed, resulting in benefits and efficiencies in

planning and programming.

Data is shared in meaningful ways through PowerBi, communicated through highly effective Telegram groups, and work with Council to communicate via social media. Being 'in this together' has seen innovations tested and approved that would not have been considered under a traditional contract, such as the emulsion stabilisation mill. Tasman Alliance is tasked with road maintenance and asset management covering 1099km of urban and rural roads in an area of 10,000 square kilometres, with 17 townships, with a current population of 58,700 people. Downer has been part of the Alliance contract since 2020, with the four-year term ending 30 June 2024.





## Major Associate Award

### Dentons Kensington Swan



In 2005, Richard Michael, then-Chief Executive of the New Zealand Contractors Federation and Andrew Skelton, partner Kensington Swan, entered into an agreement for Kensington Swan to become a Core Associate of the Federation, with Andrew noting “we are excited by the prospect of developing this closer relationship with the Federation and its members”.

The relationship has continued uninterrupted since then, and it is a testament to the strength and value of the relationship that it continued beyond 2020 when Kensington Swan combined with Dentons, the world’s largest law firm.

Dentons Kensington Swan’s relationship with CCNZ can be summarised at three levels – first, as legal adviser to CCNZ itself, where Paul Buetow has for many years been an ex-officio member of the Executive Council and advised the Society on many key issues including the merger of the Contractors Federation and Rooding NZ, the establishment of CCNZ and its constitutional Rules, the sale of Margan House, and much more.

Second, the Dentons team, including Paul Buetow, Stuart Robertson, Brendan Cash, Katrina van Houtte, James Warren, and their wider teams, have provided legal services direct to members, offering an initial free 15-minute consultation. Most of the contract templates and resources members can access on the CCNZ website have been developed by Dentons, in collaboration with CCNZ. The team are frequent attendees at branch events, with Stuart being a longstanding CCNZ Auckland Branch committee member.

The Dentons team has also made its services available to CCNZ members through roadshows and webinars on many

topics, not least during the COVID-19 pandemic, where advice on contractual obligations and how to look after workers was sorely needed.

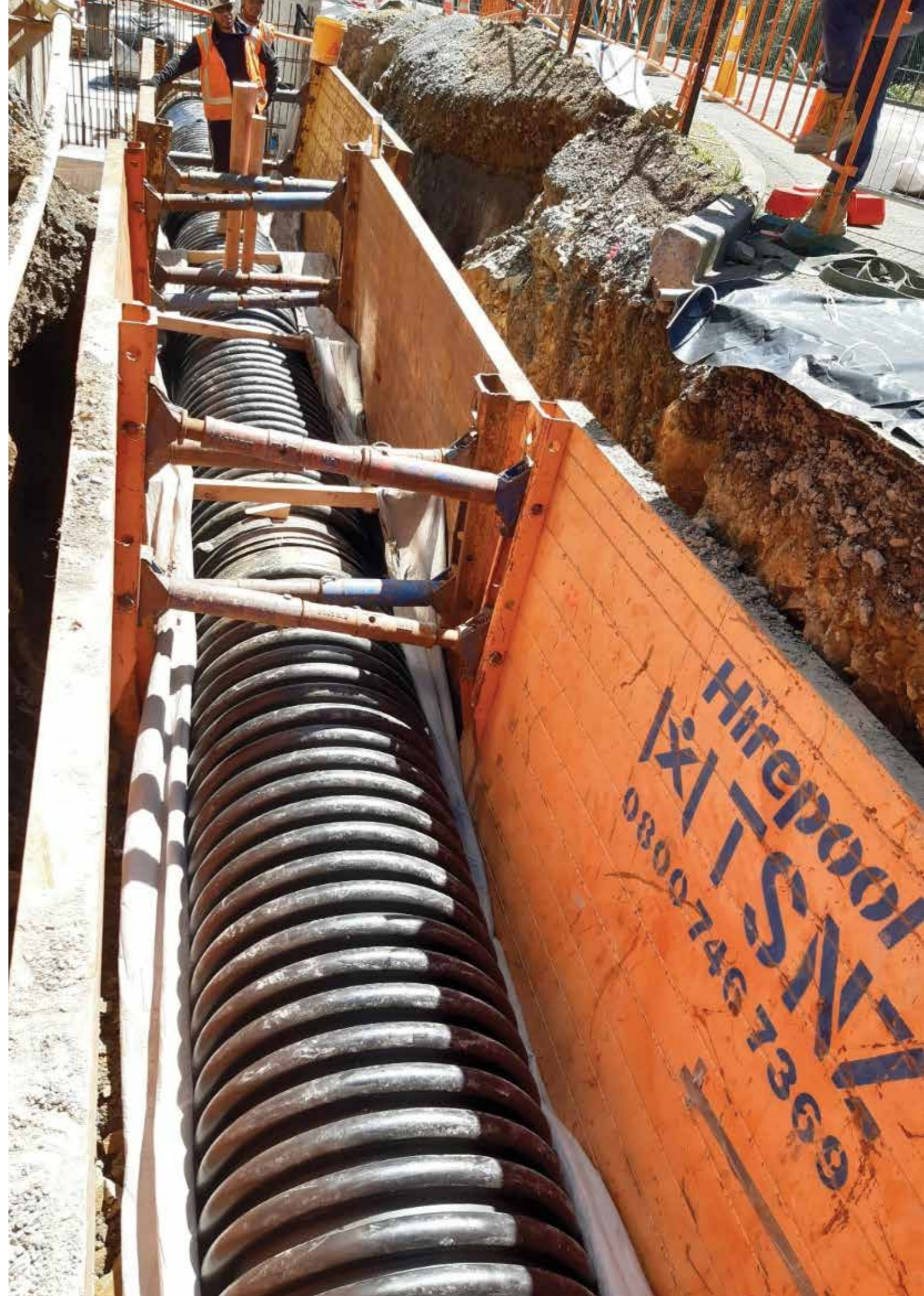
Third, Dentons have represented and supported CCNZ in many of the most significant government and legislative reviews that fundamentally impact the industry, including the review of retention monies under the Construction Contracts Act, the Health and Safety reforms, voidable transactions where (then) Kensington Swan ran an appeal to the Supreme Court on behalf of Highway Stabilisers, and the review of NZS3910 in 2016. Not to mention Select Committee appearances alongside CCNZ.

Most recently, Dentons have represented CCNZ in the latest review of NZS 3910, with Paul the contractors representative on the review group along with Jim Juno. This has been a massive undertaking, involving the establishment of two industry reference groups to help inform representation (one of legal advisers and one of contractors), intense negotiation, industry workshops, and help with CCNZs and contractor member submissions.

Subject to the review group accepting the CCNZ submission, NZS3910 will be a better fit for civil contractors in the future as result of this leadership, engagement and hard work.

The Dentons Kensington Swan team have been very generous with their time and their sponsorship, and never hesitated to provide contractors with support when it is needed. CCNZ are grateful for their ongoing support.

• Previous winners of the Major Associate Award have been *MATES in Construction* in 2022, *Hynds* in 2021 and *Hirepool* in 2019





# PEOPLE AWARDS 2023

## Outstanding achievements within the civil construction industry

The **Z People Awards** were developed by **Civil Contractors NZ**, with support and sponsorship from **Z**, to recognise the outstanding achievements of individuals within the civil construction industry. Read about the winners and finalists from the people and companies who nominated them.



### **William Adams** Z People – Emerging Leader **NOMINEE**

#### **Brian Perry Civil**

Will is a driven and highly capable Site Engineer and has been an integral part of Brian Perry Civil since February 2021. His introduction to the civil industry stemmed from his inherent fascination with construction, heavy machinery and plant.

Will's academic aptitude for maths and physics eventually led him to civil engineering. His commitment is reflected not just in the projects he has undertaken, but also in his belief in the value these projects bring to communities.

After several major water infrastructure projects, Will has expanded his sphere of responsibilities and skills. Initially a site engineer, he has recently had considerable exposure to project management. His goal is to transition towards a PM role, enabling him to apply his technical acumen, robust health and safety focus, and exceptional communication skills on a broader platform.

Will is an efficient communicator, whether it be with project managers and directors, clients, specialist subcontractors, and iwi. He believes that such interactions not only enhance a project's success but also provide a learning ground for understanding different perspectives.

Will aspires to continue his journey by managing construction projects. His unique mix of passion, expertise and interpersonal skills positions him as a future leader in the field, committed to creating infrastructure that serves and benefits the community at large.



### **Piyush Bhardwaj** Z People – Emerging Leader **NOMINEE**

#### **Acciona Construction New Zealand**

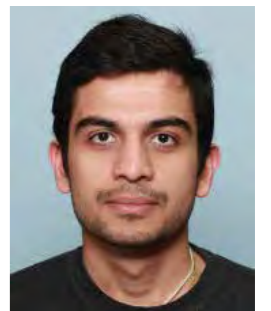
Piyush has been a part of the Acciona family for 18 months working on the Eastern Busway Alliance.

From a family of civil engineers, Piyush started his career as a Graduate Engineer in India, where he quickly realised the importance of management skills to become an effective leader in construction.

With some technical experience accumulated, he decided to pursue a Master of Engineering in Project Management at the University of Auckland. Along the way, he noticed a huge difference in the way the two countries' industries operate and saw it as an opportunity to use his work experience and newly acquired academic skills to make a positive impact.

His international experience helps him understand the challenges and gaps faced in delivering multi-faceted projects. With his enthusiasm to learn and deliver results, he looks for more efficient ways to conduct site works to minimise the impact on the stakeholders and environment.

Working on improving his performance, and committed to creating a positive work environment, Piyush aspires to be a Project Engineer, learning about upcoming technologies in the sector which can be implemented to take a project to a level above business as usual. Long term, he wants to get into management where he can make a positive impact. He believes there are always opportunities for improvement, and sharing knowledge leads to a positive impact on the industry, thereby creating a better tomorrow.



### **Jamie Clark** Z People – Emerging Leader **FINALIST**

#### **Fulton Hogan**

Jaime grew up on a farm, with the freedom to build makeshift dams and bridges across the farm creek, leading to an interest in building infrastructure to make people's lives easier and more enjoyable. Many of his extended family were involved in a range of engineering fields, which inspired him to attend university to gain a formal education in civil engineering.

Jaime has recently been appointed Fulton Hogan's Pavement Engineer – South Island Lead, within the company's national Engineering Solutions team after learning the technical side of pavements, materials and design as part of the national Pavement and Materials team. He provides technical construction advice and failure mode analysis investigation and reporting, across Fulton Hogan's various maintenance contracts and construction projects.

This included construction quality monitoring on the Christchurch Northern Corridor, NOC and Local Authority contracts, and heavy-duty pavement design and construction supervision. He is responsible for all pavement designs and technical construction support across the South Island.

Within Engineering Solutions, Jaime has been involved in numerous research and development projects, predominantly around innovative pavement construction techniques or the use of sustainable alternative materials or specifications such as his recent work the use of dense graded aggregates. Jaime is passionate about providing New Zealand's communities the infrastructure assets they need, but doing so in a sustainable way which promotes low carbon pavement construction, and hopes to further his expertise in this developing field in his career ahead.



**Lucia Haddad Z People – Emerging Leader NOMINEE**
**Acciona**

Luci has been employed with Acciona Construction for three years, working on Te Ara Tūhono (Puhoi to Warkworth motorway), then moving to the Eastern Busway Alliance in Auckland.

Growing up in Mexico, Luci didn't see many women working in the construction industry. She eventually moved to New Zealand via the United States and began working for Acciona as an administrative assistant in Health and Safety. This was her first experience in infrastructure, and where the passion for this industry was born. She then went on to gain valuable field experience where she played a key role in working with constructors to protect local land, fauna, flora, and water on her very first project.

Luci aspires to leave a better world for her daughter and future generations and her current position enables her to influence positive change within her working group and continuously raise the standards of sustainability practices on projects. However the goal on completion of the Eastern Busway is to be a Sustainability Lead, with a view to continued progression in her field. By progressing in this industry, Luci aims to contribute towards the ongoing efforts around sustainability in construction and playing her part in driving good change in this space.


**Piripi Jessup Z People – Emerging Leader FINALIST**
**Topline Contracting**

Piripi (Piri) Jessup started in the industry in 2013, initially with McMillan Concrete where he discovered his passion for concreting and developed a solid skill set.

Piri joined Topline as a labourer in August 2016, gaining skills and qualifications along the way. Piri is now Operations and Project Manager and responsible for up to 20 staff at any one time. He is well respected by his team and crews, having a great rapport, weaving the crews together with the management team.

Piri takes over when Topline's senior management team are away, overseeing the day-to-day operations and taking overall charge of Topline, running multiple contracts at any one time, with neither supervision nor overview.

Piri is heavily involved in training and mentoring the Topline Training Academy Cadets. He has represented Topline at the EIT Careers Expo Day where students get hands on experience of what the industry has to offer.

Piri has gained many skills and qualifications as a result of his motivation and enthusiasm to get ahead in this industry.

He has completed his L4 apprenticeship in Concrete Placement and Finishing, Traffic Controller and STMS Qualifications, Wheels tracks and rollers licence endorsements and Level 3 Civil Infrastructure Works Certificate. He's also completed Dale Carnegie leadership training and is looking towards a L5 Connexis Project Management certificate. Piripi sees himself progressing to managing larger scale and more complex projects as his experience grows.


**Moala Ofa Z People – Emerging Leader FINALIST**
**Ventia**

Mo has been with Ventia for close to five years. His career began as an Engineering Cadet, after coming from Tonga for further studies in 2018. After completing his studies in a Bachelor of Construction he was offered a role as Maintenance Engineer on Ventia's Auckland North-West urban maintenance contract.

Mo sees himself progressing within Ventia in leadership roles. Mo has been "an outstanding and crucial member of the Ventia Transport business and leader within our Transmission Gully Operations and Maintenance project. He has contributed so much to our business and the industry."

Mo is said to be a motivational and emphatic leader. "He motivates by supporting his staff and leads by example. Mo celebrates success with his team with regular BBQs during toolboxes, and acknowledging good work done by staff during staff meetings. Mo brings a strong safety focus with his operational knowledge – there have been no injuries within his team in the year during the operation of Transmission Gully. He makes it a point to keep our colleagues safe, as well as the general public."


**Hamish Race Z People – Emerging Leader NOMINEE**
**Schick Civil Construction**

Hamish has been at Schick for six years progressing from Junior Project Manager to Nelson Marlborough Manager.

Hamish started on the tools in the commercial building industry and a bit of civil construction. After the small introduction into civil construction and combining that love of leading a team to epic results, he made the move to Schick to take on a junior project manager role and has not looked back.

Hamish has held the Nelson Marlborough role for the past two years. His major focus is being the best regional manager he can be and taking that role to another level. He knows that this will set him up for whatever is next for him within Schick. He has a real passion for leading with empathy but with a focus on getting results. His sponsor at Schick says, "I'm looking forward to Hamish making his current role even better and I can't wait to see what is next for him."

"What I know is, he will have an impact on a lot of people's lives and definitely has a passion for making the civil industry more well-known and an appealing industry to be working within."


**Bariz Shah Z People – Emerging Leader HIGHLY COMMENDED**
**Brian Perry Civil**

Bariz migrated to New Zealand in 2001 after living in Pakistan as a refugee for several years. Despite lacking a sense of identity and traveling an unconventional path, Bariz was able to find success, graduating from the University of Canterbury with a BE(Hons) in Civil Engineering, and a Diploma in Global Humanitarian Engineering.

Bariz has been a part of the Fletcher Construction Graduate Programme since February 2022, and based at Auckland Airport where Brian Perry Civil (BPC) is currently delivering large scopes of new pavement and remedial work. He has found his passion to help better other people's lives.

"I initially wanted to help rebuild my homeland once I became a successful civil engineer", says Bariz. "However, one year into my BPC Graduate Engineer role at Auckland Airport, I realised my love for solving problems was not limited to a region."

Bariz wishes to progress into a project management role within the civil industry. "As a site engineer, my goal is to build experience and capability with civil project delivery within the complex airside environment," he says. He is particularly keen on "improving team dynamics via constructive feedback, enhancing our culture around safety and well-being by empowering team members to speak up when it matters, and increasing efficiency while lowering our carbon footprint by embracing sustainability and innovation."


**Ryan Thom Z People – Emerging Leader WINNER**
**Utilities Infrastructure**

Ryan has been employed by Utilities Infrastructure for just under three years, starting as a junior project manager and now progressing to project manager, running the two largest projects Utilities Infrastructure has secured in the past year.

Ryan joined the industry as a graduate engineer in 2019 with Brian Perry Civil. His talent and leadership was immediately recognised, and he was rapidly given responsibility running projects and teams around the South Island.

Ryan plans to develop his technical knowledge and leadership skills to move into a senior leadership role within an infrastructure business. His ultimate goal is to own his own civil construction business and be able to grow and develop the next generation of leaders.

Ryan has achieved rapid career growth and development, promoted success in the teams he has led, encouraged personal growth in his people and shown success in the outcomes he has delivered at just twenty-seven years of age.



**Jonathan Cashmore Z People – Personal Improvement NOMINEE**  
Fletcher Construction

Jonathan joined the civil industry through Fletcher Construction’s engineering internship programme towards the end of 2019. Jonathan’s internship was based at the Ara Tūhono – Pūhoi to Warkworth Motorway project throughout the 2019/2020 summer season. At the close of that summer Jonathan was offered a permanent role (30hrs a week) on the project as an environmental coordinator while he finished his civil engineering degree. Jonathan graduated from Auckland University as a Bachelor of Engineering [Civil and Environmental] in November 2021 with First Class Honours.

Since he began as an intern in 2019 Jonathan progressed to become a senior site engineer on the \$880m project, responsible for the finishing works of the southernmost 4kms of the Motorway.

His passion for the outdoors, problem solving and desire to make a positive difference to people’s lives drew him into the civil engineering and contracting sphere. A career where he can make a positive difference to how we live our everyday lives.

Jonathan is passionate about the civil construction industry and is working hard to close out the final aspects of the Pūhoi to Warkworth project before looking to his next role with direct reports and a team to lead on his next project.



**Taylor Cross Z People – Personal Improvement FINALIST**  
Simcox Construction

Taylor joined Simcox Construction (part of the Isaac Group) in mid-2020, progressing from Foreman to Construction Supervisor.

Initially, he had low self-esteem. But, through the civil industry Taylor has matured into a classic and fun individual with a warm personality – highlighting his ability to lead and his tremendous people leadership potential. Taylor connects with his wider team and shares his journey and life skill methods with anyone else who needs mental health help. He is an outstanding connector and culture builder for the Simcox team.

He’s also an unbelievably genuine champion of safety with a real story to back up his passion and resonate with new staff he is training and mentoring.

At just 23 years old, a concrete saw kicked 180 degrees and sliced open his neck – nearly killing him. The real feeling and passion he now brings to keeping everyone safe is evident every day.

Taylor was initially drawn to the Simcox team by the type of work the company does, conversations with the management team, and even recommendations from the public.

“My experience with Simcox was that I have had incredible support and a push to be a leader and ever improving ability to connect with all types of people in our teams and regular clients and subcontractors.”



**Virginia Hogan Z People – Personal Improvement NOMINEE**  
McConnell Dowell Group

Virginia’s studies in environmental science and management provided her with the knowledge and skills to understand the environmental impact of civil projects, while her work experience provided her with valuable insights into environmental policy and sparked a passion for achieving sustainable outcomes.

Virginia has been employed with McConnell Dowell since 2022 as a Sustainability Advisor. She demonstrates exceptional dedication and commitment to achieving environmental and sustainability outcomes, collaborating with digital engineering and estimating teams on projects like the Auckland Airport’s WP2 & WP6 to track carbon impact and identify carbon hotspots. She also actively engages with the tender team to identify sustainability initiatives and waste reduction measures.

Her skills include ensuring the delivery of project targets, implementing corrective actions, and effectively communicating policy and legislative requirements to site teams. By overseeing the successful implementation of construction sustainability management plans, Virginia is dedicated to achieving project environmental and sustainability goals.

Virginia drives progress in the civil industry, ensuring that McConnell Dowell remains at the forefront of environmental stewardship.

She would like to further develop her knowledge in the procurement, supply chain and digital uptake space focussing in on how we account for our emissions and improve internal systems through interaction with engineers and designers, increasing their uptake of how they view sustainability instead of just seeing it as recycling materials.



**“COMPARED TO OTHER FUEL PROVIDERS, Z ALWAYS COMES OUT ON TOP”**

- Rachel, Chevron Traffic Services



Z Business makes managing fuel easy. Get great discounts, better rewards and manage your invoices all in one spot.

Sign up for the 2022 Canstar Blue Best Small Business Fuel card at [z.co.nz/business](https://z.co.nz/business)

Use promo code: **CIVILCONT**

Standard Z Business terms and conditions apply. See [z.co.nz/business](https://z.co.nz/business)

## James Jarman **Z People – Personal Improvement NOMINEE**

### Utilities Infrastructure

James is a crucial member of the team at Utilities Infrastructure where he's been employed for six years, starting as a 2IC and progressing to Project Manager.

James joined the civil industry 15 years ago, starting as a drainage labourer and progressing his way to become a drainlayer, water installer and foreman, completing increasingly complex work involving temporary works and dewatering.

In 2022, with Utilities Infrastructure's support, James started his own subcontracting business focused on concrete cutting services. His plan is to build on his technical knowledge and has now developed his business skills through further learning in finance, pricing, soft skills, communication and strategic planning. His impressive technical knowledge and leadership skills led to a promotion to Superintendent responsible for training and development of the crews reporting to him. Now a project manager, James is responsible for multimillion-dollar projects whilst applying a new and recently developed skillset.



## Girish Karthis **Z People – Personal Improvement NOMINEE**

### Fletcher Construction

Girish has been employed at Fletcher Construction since 2018, starting as a Graduate Engineer and successfully progressing to Senior Site Engineer, working on major infrastructure projects including seeing the opening of Ara Tuhono Puhoi to Warkworth Motorway.

Girish grew up knowing he wanted to be a civil engineer, following in the footsteps of his father. He studied for his Bachelor of Civil Engineering in India and completed his Masters in Construction Management in Auckland. Girish joined as a graduate engineer at the Puhoi to Warkworth motorway project after finishing his master's degree.

Girish has a natural passion for construction and for the foreseeable future would like to remain within this industry. He always wants to improve his skillset by learning from others. He also wants to share his skills and knowledge to his colleagues for the betterment of the construction industry. Girish is currently working as a Senior Site Engineer, and he wants to be a Project Engineer in his next role. His long-term goal is to remain in New Zealand and continue to work on world class major infrastructure projects and ultimately enhance his skills, grow as an individual and positively contribute to the construction industry



## Anju Kurian **Z People – Personal Improvement FINALIST**

### Acciona Construction

Anju joined Acciona in 2019, following in the footsteps of her father who worked in construction in India and Dubai. Her father encouraged both Anju and her twin sister to become civil engineers.

Anju landed her first role in Dubai, but being a female engineer in a male dominated environment was holding her back, so she took a "leap of faith" and successfully completed her master's degree with the University of Auckland.

Anju made herself known to Acciona at the careers fairs in Auckland, wrestling her way to the front of the stand quite literally grabbing their attention. Her drive, passion and personal values aligned with Acciona's and she was able to secure herself a job working on the Puhoi to Warkworth Project in the Structures Team as a Structural Graduate Engineer.

With Acciona being a global construction and renewable energies company, Anju interacted with a number of specialist advisors that came to Puhoi from Spain, and one area in particular that has sparked an interest for her is becoming a technical engineering trouble shooter within Structures. Anju has seen the innovation and research that went into the Puhoi bridges and she is keen to be involved in other major projects so that she can apply these learnings.



## Clayton Kruger **Z People – Personal Improvement NOMINEE**

### Brian Perry Civil Waikato

Clayton Kruger is currently serving as a Foreman with Brian Perry Civil, a post he has held since 2016. His journey was inspired by his grandmother, who wanted him to pursue meaningful work.

His affinity for practical problem-solving led him to a career that started in South Africa and has blossomed in New Zealand over the past seven years. His focus within the industry lies primarily in marine and water infrastructure projects, a domain in which he has excelled.

Clayton's approach is reflected in his aspiration to become a Superintendent and ultimately move into project management. His career trajectory is underpinned by a strong technical skillset, focus on health and safety, and robust communication. These attributes – strengths – have proven invaluable in his interactions with diverse audiences, including project managers, clients, and stakeholders, as well as subcontractors and his own team.

His enthusiasm, dedication, and growth mindset have been recognised by his peers. In recent projects, Clayton led a self-perform team of up to 15 staff, demonstrating exceptional leadership and coaching. His focus on development and growth has impacted those around him, inspiring them to reach their full potential.

In his current role, Clayton has navigated complex safety and environmental challenges, including addressing potential impacts on the environment such as erosion control and protection of local wildlife showcasing Clayton's ability to forge strong relationships and act as a valuable ambassador for his company.



## Jonny Overend **Z People – Personal Improvement HIGHLY COMMENDED**

### HEB Construction

Jonny has been with HEB construction for 12 years, after starting out in the civil space at BG Contracting in Christchurch. The civil area needed a truck driver and Jonny opted to take up this role. He became a truck driver/labourer, working his way up the career ladder. Jonny then moved to Blenheim. He had at this point, become a Foreman working in sub-divisions, then moving to Nelson where he undertook and completed the National Certificate in Drainlaying. Jonny moved back to Christchurch and took up positions at BG Contracting and Trenching Dynamics. He was then moved to HEB Construction to work as a Foreman.

Jonny lives and breathes the ethos of "Doing my job and doing it properly". This ties in HEB's Values; Open (Pono), Real (Tika), Together (Kotahitanga), Care (Aroha), and Deliver (Whanake). Jonny sees value in teaching and mentoring the younger generation, encouraging them to enrol in formal qualifications and supporting them along their learning journey.



## Sagas Raveendran **Z People – Personal Improvement NOMINEE**

### HEB Construction

Sagas, a Construction Management graduate, has been actively involved in the construction industry since 2016. He embarked on his career as a Site Engineer, gaining valuable experience in managing projects in the commercial and residential construction sectors. In 2020, driven by his passion for major infrastructure projects, he joined Fletcher Construction eager to deepen his understanding of project lifecycles and the crucial handover phase. He secured a position within the Works Completion Team, where he collaborates with cross-functional teams to ensure smooth project handovers. With his diverse background and an unwavering commitment to his professional growth, Sagas made valuable contributions to the successful delivery of the Ara Tuhono – Puhoi to Warkworth Motorway Project and is continuing his support to hand over the next phase of the project.

Sagas is keen to pursue his career in the Project Delivery and Handover side of construction.



## Jacob Walmsley **Z People – Personal Improvement WINNER**

### Brian Perry Civil

Jacob began labouring aged 18 on the Majestic Centre Strengthening project and Mackays to Peka Peka Expressway and quickly realised that civil construction was the career for him. Recognising Jacob's enthusiasm, motivation, and achievement, his Foreman recommended he undertake an engineering cadetship.

Jacob progressed to Assistant Engineer, while undertaking his Diploma in Civil Engineering which he completed in 2021 through NZIHT, having gained a wide range of practical onsite experience while studying, and demonstrating the personal attributes that have shaped him into the well-rounded Project Engineer he is today.

Having been at Brian Perry Civil (BPC) for the past eight years, Jacob has gone from hammer hand to Project Engineer, responsible for managing BPC's \$7m Taranaki Street Pump Station project in downtown Wellington.

Jacob has a real passion for the industry and the drive, ability, and personal attributes to progress to a project management role and then into senior leadership. He is committed to building his career and supporting others with the same opportunities he has been given.



Sponsored by **Connexis** to recognise those employers that **provide opportunities** for their **staff** to gain **skills** and **knowledge** through a **nationally-recognised** qualification.

These employers **invest** across **all levels** of their business, **embedding training** as a matter of course in everything they do, and **create pathways** for their people to move up.



## All go for future training

**CONNEXIS AWARD CATEGORY 1: Turnover up to \$10m**  
**COMPANY: AWF**

**Training people to prepare them for the work ahead. As part of the Accordant Group, AWF brings a unique capability to deliver recruitment and training solutions across Aotearoa. With 21 branches from Kaitia to Invercargill, AWF is a significant contributor to the sectors we supply.**

Working with tier 1, 2 and 3 contractors, AWF has been providing staffing solutions for the completion of many major infrastructure projects across New Zealand, for over 35 years. In partnership with clients, AWF creates career pathways and connects workers to long-term employment opportunities, lifting capability and competency levels within its

workforce for the benefit of candidates, clients, and the wider industry sector. An average of 1,800 people per annum receive formal job qualification training through AWF. Internal training by AWF is delivered in a variety of disciplines including: Traffic Management Courses, Civil Site Safe Passports and ConstructSafe.

Working closely with Te Pūkenga Connexis, AWF ensures training is accessible, by facilitating an online training delivery pathway. Put simply, AWF has the market presence, internal talent, and unique recruitment and training resources, to be a valued partner to the candidates and companies we support every day.



## A strong culture gives the work purpose

**CONNEXIS AWARD CATEGORY 1: Turnover up to \$10m**

**COMPANY: Odlum Group**

**Coming into its 40th year in business, Odlum Group's growth has been driven by the development of its people.**

With the successful transition to being a second generation run company the development of strong team of leaders has become embedded.

The management team really drives the training culture and aims to maintain these high standards throughout the company.

Odlum Group offers a range of training and development from Connexis career paths to leadership programmes, giving staff a sense of purpose and their families a future in civil construction.

Generally focused on Three Waters and Trenchless methods, Odlum Group strives to create inspiring leaders that are passionate about achieving greatness!

One of the top values at Odlum Group is to make sure everyone has a purpose, from labouring to machine operating and all the way up to the General Manager.

Taking pride in work and wanting families to be proud of the culture they are a part of is at the core of the company's philosophy. With a company of 35+ staff, the goal is to create consistent targets for everybody with 5-year plans and career paths. Development at Odlum Group is a requirement and a commitment that everyone embraces.



## Dedication, respect and support for people to succeed

**CONNEXIS AWARD CATEGORY 1: Turnover up to \$10m**

**COMPANY: Topline Contracting**

**Dedication, respect and support for people to succeed. Topline Contracting has a vision to influence positive change for future generations through employment and training opportunities.**

With two distinct training streams centred around a pastoral care programme which encompasses growth of the whole person, Topline Contracting aims to provide opportunities for its people and their whanau to realise their full potential at work and in life.

Through internal training, team members are encouraged and supported to learn and grow whether that be through formal qualifications, licenses and endorsements or on-the-job training. Training plans and career pathways are individualised

to promote personal growth and to develop a career within the industry.

The Topline Training Academy focuses on making the unemployable employable and creating future workers. During a 12-week programme, cadets complete a full working day, are picked up at 6am and dropped off at the end of the day. They develop work-ready skills and experience, receive relevant industry training and develop general life skills which will prepare them to enter and remain in the civil construction workforce.

Topline believes every person has the potential to succeed and deserves the opportunity to be the very best version of themselves.

He aha te mea nui o te ao? He tangata, he tangata he tangata. What is the most important thing? It is the people, it is the people, it is the people.





## Integrated training on the job to support staff

CONNEXIS AWARD CATEGORY 2: Turnover between \$10-\$100m  
COMPANY: ICB Retaining and Piling

ICB values the experience and fresh insights that experienced new staff bring to the company.

The company nurtures great individual talent and provides an environment where people can flourish personally and professionally.

ICB offers further education and continuous professional development for staff, such as enrolling for Trade Certification through Connexis, the Infrastructure Industry Training Organisation.

Continuous training is important for staff both internally and externally through organisations and continuous competency assessments are conducted

for things such as operating an excavator, loader, small plant e.g. chain saws and concrete saws, drilling machines etc. The company offers a range of mandatory training including Slings, Lifting and Placing with an excavator, reading and interpreting plans, first aid, height and harness use and most staff are certified on ConstructSafe Tier 1.

Investing in people is an essential characteristic of the business. ICB continually works on people's development to progress their career aspirations as well as negotiating effective ways to develop their capabilities, so their work is meaningful and worthwhile.

CIVIL + ENERGY + TELECOMMUNICATIONS + WATER

# Skill Up



## With an Infrastructure Qualification or Apprenticeship



📞 | 0800 486 626  
✉ | askus@connexis.org.nz  
🌐 | www.connexis.org.nz  
📘 | ConnexisNZ



## Commitment to career progression and qualifications

**CONNEXIS AWARD CATEGORY 2: Turnover between \$10 and \$100m**  
**COMPANY: Pipeline & Civil**

**Pipeline & Civil is committed to upskilling its team for the benefit of the wider industry and the communities in which it works.**

The team knows people are the core of the company's success, and leadership skills are highly important in the construction sector, so Pipeline & Civil runs an internal leadership training programme.

This programme is facilitated by senior leaders who are passionate about passing this knowledge on to others. Demonstrating commitment to recognising talent and providing clear opportunities for internal promotion, the company has created a new career pathway process for frontline staff and supervisors

in partnership with Connexis, with 12 staff currently undergoing Civil Trades training programmes with Connexis and BCITO along with many other successful graduates of these programmes.

The company has two internal trainers in the business who are constantly supporting team members to upskill and gain higher levels of competency in different areas of construction.

Each staff member has their own training and development programme developed through the performance and development review process, where they can identify pathways and courses that appeal to them and help the company to move forward.



## The benefits of company training are many

**CONNEXIS AWARD CATEGORY 2: Turnover between \$10 and \$100m**  
**COMPANY: Waipa Civil**

**A company tag line is *Nāku te rourou nāu te rourou ka ora ai te iwi* – With your basket and my basket, we will sustain everyone.**

This signifies the importance of every individual and their input into the construction process and how we can all help each other to get better at what we do. Waipa Civil provides training and professional development to keep its people challenged, motivated, and engaged.

Training gives Waipa Civil's people a better

understanding of their responsibilities and provides the knowledge and skills they need to do their job safely and effectively.

Investing in people reduces the need for supervision, reduces health and safety risks, boosts morale, increases productivity and contributes to staff feeling valued, which results in reduced staff turnover and maintaining industry and institutional knowledge.

People that demonstrate leadership skills and wish to advance, are supported to progress to higher responsibilities at Waipa Civil.



## Good systems build capability, expertise and confidence

**CONNEXIS AWARD CATEGORY 3: Turnover \$100m+ and Alliances**  
**COMPANY: Brian Perry Civil**

**To ensure BPC leads the industry in training and developing people, the company has developed a comprehensive strategy to ensure critical requirements are met.**

A Competency Management System that seamlessly captures competencies across the business has been put in place, and through the development of clear role profiles, the company identifies any gaps and comes up with a plan to fill them. People are now able to view the competencies they require for their roles and progression against these on a user-friendly app.

To ensure people have the skills and knowledge to understand their safety and compliance requirements,

Brian Perry Civil has partnered with The Skills Organisation to develop a contextualised literacy and numeracy programme called STRIVE. BPB currently has 28 team members completing the programme and is seeing real, valuable outcomes already, in terms of increased confidence and looking towards future opportunities and pathways within the business.

Forty-one people are actively employed as apprentices, and the company is supporting them through their journeys. These people are provided with dedicated on-the-ground support and the whole team supports the importance of obtaining formal qualifications.



## A successful training philosophy and programme

**CONNEXIS AWARD CATEGORY 3: Turnover \$100m+ and Alliances**  
**COMPANY: HEB Construction**

**HEB Construction's skills training and well-being programme include life skills, workplace safety, literacy and numeracy, well-being, cultural programmes and pastoral care as well as formal industry qualifications.**

This approach supports HEB's goal of growing the competency of all its people across each business unit.

We have a strong focus on diversity, equity, and inclusion by explicitly targeting under-represented groups such as Māori and Pasifika communities to ensure the highest chance of success with the positive impacts flowing directly into their whanau

and communities.

The result is a programme designed to increase the success of HEB's people to truly thrive in the work and home environment.

Providing meaningful and authentic interactions along-side genuine partnerships provides people with a sense of belonging and connection. This is the learning culture we wish to promote, embrace, and live.

HEB's programme builds people's mana and grows their confidence.

Working together, HEB Construction aims to provide a higher likelihood for long-term success for its people and their future careers.

## 2023 CIVIL INDUSTRY TRAINING AWARD WINNERS



## JUDGES CITATIONS for the WINNERS

### CATEGORY 1: Topline Contracting



From the day **Topline Contracting** started, owner and managing director Taurus Taurima had a vision of providing employment and training opportunities that not only benefited the individual but extended out to their whānau and the wider community with the hope of influencing positive change for future generations.

Through the Topline Training Academy, they are able to offer opportunities to more people and connect them with other employers looking for employees.

During their time at the training academy cadets not only gain hands-on skills and experience with the prospect of getting off the benefit and off minimum wage, they are also supported in addressing the

barriers they have faced that have prevented them from obtaining and maintaining long-term meaningful employment.

Topline Contracting is a company that is absolutely leading the way in cultural inclusion, diversity, and community – all the while demonstrating that business productivity and developing people can be highly successful.

This is a company with a genuine philosophy of social responsibility for people and the industry. They have a massive social procurement focus – ‘always people first’ and genuinely love being part of learner success and want to leave a legacy for the industry and the community.

### CATEGORY 2: Pipeline & Civil



**Pipeline & Civil** are committed to investing in their staff and the wider industry to create a culture of loyalty and passion when it comes to their company's success.

From partnering with local schools to supporting their current staff, some who have been with the company for over 20 years, Pipeline and Civil are creating opportunities for all that can take them from new recruit to industry leaders.

With Hugh Goddard's passion for training and developing people at the helm of Pipeline and Civil,

their motto of “everyone is growing” is undeniable as their company grows and the importance of training is passed from person to person.

Sound business practices to ensure staff retention, development, and career progression are all underpinned by cultural inclusion.

Pipeline and Civil is an outstanding company that demonstrates everyday within its company and the community its genuine passion to create opportunities for all and develop people to meet their full potential.

### CATEGORY 3: HEB Construction



**HEB Construction's** approach to training is underpinned by a philosophy that recognises the whole person and not just the employee. From encouraging their people to undertake training, to celebrating success to building pathways, HEB are committed to their goal of growing the capability of all their people across each of their business sectors.

HEB Construction's Learning and Development team has expanded their focus from simply skills training and wellbeing to focus on career development that provides a full wrap-around programme. This programme includes life skills, workplace safety, literacy and numeracy, wellbeing, cultural programmes, and pastoral care, as well as formal industry qualifications. This approach supports HEB's goal of growing the capability of all of its people across each business sector.

There is a strong focus on diversity, equity and inclusion by explicitly targeting underrepresented groups such as Māori and Pasifika communities to ensure the highest chance of success, with the positive impacts flowing directly into their whānau and communities. The result is a programme designed to increase the success of our people, some of which may have failed to reach their potential at school, or who require additional life skills to truly thrive at work.

HEB is clearly striving to fully integrate and embed training into its ethos, including the acknowledgement that the external environments are included in the support they provide.

There is strong integration of training into the broader business approaches, with a range of tools to support training, measure its effectiveness, and inform improvements.



The 2023 Awards were brought to you by

